

IL-1 alpha / IL-1F1 / IL1A Antibody, Rabbit PAb, Antigen Affinity Purified



Sino Biological
Biological Solution Specialist

Catalog Number: 50114-RP02

GENERAL INFORMATION	
Immunogen:	Recombinant Mouse IL-1 alpha / IL-1F1 / IL1A protein (Catalog#50114-MNAE)
Preparation	Produced in rabbits immunized with purified, recombinant Mouse IL-1 alpha / IL-1F1 / IL1A (rM IL-1 alpha / IL-1F1 / IL1A; Catalog#50114-MNAE; NP_034684.2; Ser 115-Ser 270). IL-1 alpha / IL-1F1 / IL1A specific IgG was purified by Mouse IL-1 alpha / IL-1F1 / IL1A affinity chromatography.
Ig Type:	Rabbit IgG
Specificity:	Mouse IL-1 alpha / IL-1F1 / IL1A
Formulation:	0.2 µm filtered solution in PBS
Storage:	This antibody can be stored at 2°C-8°C for one month without detectable loss of activity. Antibody products are stable for twelve months from date of receipt when stored at -20°C to -80°C. Preservative-Free. Sodium azide is recommended to avoid contamination (final concentration 0.05%-0.1%). It is toxic to cells and should be disposed of properly. Avoid repeated freeze-thaw cycles.
APPLICATIONS	
Applications:	ELISA,IHC-P
RECOMMENDED CONCENTRATION	
IHC-P	IHC-P: 1:250-1:1000
ELISA	ELISA: 1:5000-1:10000 This antibody can be used at 1:5000-1:10000 with the appropriate secondary reagents to detect Mouse IL-1 alpha / IL-1F1 / IL1A.

Please Note: Optimal concentrations/dilutions should be determined by the end user.

Manufactured By Sino Biological Inc., FOR RESEARCH USE ONLY. NOT FOR USE IN HUMANS.

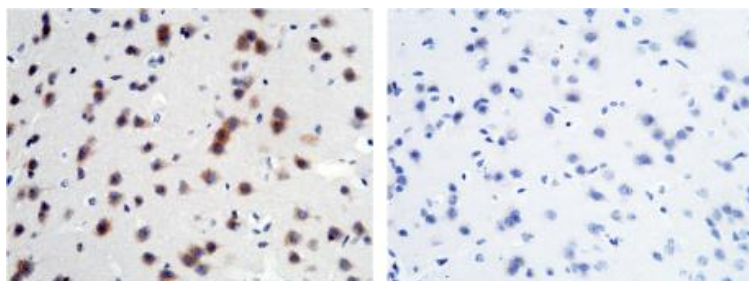
Fax :+86-10-58628220 ● Tel:+86-400-890-9989 ● <http://www.sinobiological.com>

IL-1 alpha / IL-1F1 / IL1A Antibody, Rabbit PAb, Antigen Affinity Purified



Sino Biological
Biological Solution Specialist

Catalog Number: 50114-RP02



IL1A Antibody

+

+

IL1A Antigen

-

+

Immunohistochemical staining of mouse IL1A in mouse-brain with rabbit polyclonal antibody (1:500, formalin-fixed paraffin embedded sections). The left panel: tissue incubated with primary antibody; The right panel: tissue incubated with the mixture of primary antibody and antigen (recombinant protein).