

SerpinF2 / SERPINF2 Antibody, Rabbit MAb



Sino Biological
Biological Solution Specialist

Catalog Number: 50167-R128

EliteRmab® is a registered trademark of Sino Biological Inc.

GENERAL INFORMATION	
Immunogen:	Recombinant Mouse SerpinF2 protein (Catalog#50167-M08H)
Preparation	This antibody was obtained from a rabbit immunized with purified, recombinant Mouse SerpinF2 (rM SerpinF2; Catalog#50167-M08H; NP_032904.1; Met 1-Lys 491).
Ig Type:	Rabbit IgG
Clone ID:	128
Specificity:	Mouse Serpin F2 / SERPINF2
	No cross-reactivity in ELISA with Human Serpin A1 / SERPINA1 / AAT Mouse Serpin D1 / SERPIND1 / HCF2
Formulation:	0.2 µm filtered solution in PBS
Storage:	This antibody can be stored at 2°C-8°C for one month without detectable loss of activity. Antibody products are stable for twelve months from date of receipt when stored at -20°C to -80°C. Preservative-Free. Avoid repeated freeze-thaw cycles.
APPLICATIONS	
Applications:	ELISA,ELISA(Cap),IHC-P
RECOMMENDED CONCENTRATION	
IHC-P	IHC-P: 1:50-1:200
ELISA	ELISA: 1:5000-1:10000 This antibody can be used at 1:5000-1:10000 with the appropriate secondary reagents to detect Mouse SerpinF2.
Sandwich ELISA (Capture Ab)	ELISA(Cap): 1:250-1:2000 This antibody will detect Mouse SerpinF2 in ELISA pair set (Catalog: # SEK50167). In a sandwich ELISA, it can be used as capture antibody.

Please Note: Optimal concentrations/dilutions should be determined by the end user.

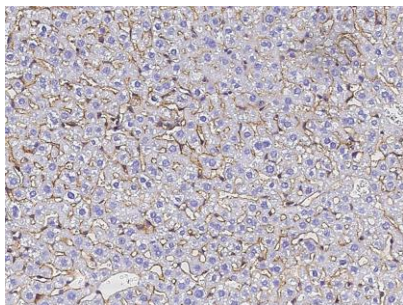
SerpinF2 / SERPINF2 Antibody, Rabbit MAb

Catalog Number: 50167-R128



Sino Biological
Biological Solution Specialist

EliteRmab® is a registered trademark of Sino Biological Inc.



Immunohistochemical staining of mouse
SERPINF2 in mouse liver with rabbit
monoclonal antibody (1:100, formalin-fixed
paraffin embedded sections).