

S100A6 / Calcyclin / CACY Antibody, Rabbit MAb



Sino Biological
Biological Solution Specialist

Catalog Number: 50229-R016

EliteRmab® is a registered trademark of Sino Biological Inc.

GENERAL INFORMATION	
Immunogen:	Recombinant Mouse S100A6 protein (Catalog#50229-MNAE)
Preparation	This antibody was obtained from a rabbit immunized with purified, recombinant Mouse S100A6 / Calcyclin (rM S100A6; Catalog#50229-MNAE; Met 1-Lys 89; NP_035443.1).
Ig Type:	Rabbit IgG
Clone ID:	016
Specificity:	Mouse S100A6 / Calcyclin / CACY
	No cross-reactivity in ELISA with Human S100A1 Human S100A2 / CAN19 / S100L
Formulation:	0.2 µm filtered solution in PBS
Storage:	This antibody can be stored at 2°C-8°C for one month without detectable loss of activity. Antibody products are stable for twelve months from date of receipt when stored at -20°C to -80°C. Preservative-Free. Sodium azide is recommended to avoid contamination (final concentration 0.05%-0.1%). It is toxic to cells and should be disposed of properly. Avoid repeated freeze-thaw cycles.
APPLICATIONS	
Applications:	ELISA,ELISA(Cap),IHC-P
RECOMMENDED CONCENTRATION	
IHC-P	IHC-P: 1:100-1:500
ELISA	ELISA: 1:5000-1:10000 This antibody can be used at 1:5000-1:10000 with the appropriate secondary reagents to detect Mouse S100A6.
Sandwich ELISA (Capture Ab)	ELISA(Cap): 1:250-1:2000 This antibody will detect Mouse S100A6 in ELISA pair set (Catalog: # SEK50229). In a sandwich ELISA, it can be used as capture antibody.

Please Note: Optimal concentrations/dilutions should be determined by the end user.

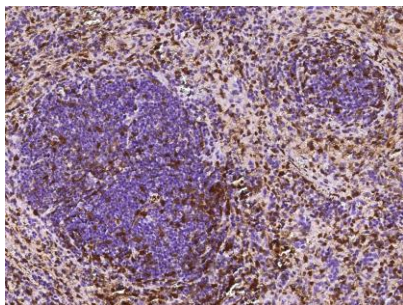
S100A6 / Calcyclin / CACY Antibody, Rabbit MAb

Catalog Number: 50229-R016

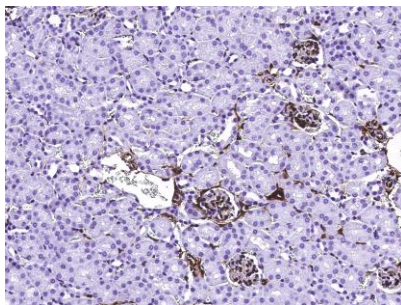


Sino Biological
Biological Solution Specialist

EliteRmab® is a registered trademark of Sino Biological Inc.



Immunohistochemical staining of mouse S100A6 in mouse spleen with rabbit monoclonal antibody (1:200, formalin-fixed paraffin embedded sections).



Immunohistochemical staining of mouse S100A6 in mouse kidney with rabbit monoclonal antibody (1:200, formalin-fixed paraffin embedded sections).