

Endoglin / CD105 / ENG Antibody, Rabbit MAb



Sino Biological
Biological Solution Specialist

Catalog Number: 50407-R001

EliteRmab® is a registered trademark of Sino Biological Inc.

GENERAL INFORMATION	
Immunogen:	Recombinant Mouse Endoglin / CD105 / ENG Protein (Catalog#50407-M08H)
Preparation	This antibody was obtained from a rabbit immunized with purified, recombinant Mouse Endoglin / CD105 / ENG (rM Endoglin / CD105 / ENG; Catalog#50407-M08H; NP_031958.2; Met 1-Gly 580).
Ig Type:	Rabbit IgG
Clone ID:	001
Specificity:	Mouse Endoglin / CD105 / ENG
	No cross-reactivity in ELISA with Human CD105
Formulation:	0.2 µm filtered solution in PBS
Storage:	This antibody can be stored at 2°C-8°C for one month without detectable loss of activity. Antibody products are stable for twelve months from date of receipt when stored at -20°C to -80°C. Preservative-Free. Avoid repeated freeze-thaw cycles.
APPLICATIONS	
Applications:	ELISA,FCM
RECOMMENDED CONCENTRATION	
Flow Cytometry	FCM: 1:25-1:100
ELISA	ELISA: 1:5000-1:10000

Please Note: Optimal concentrations/dilutions should be determined by the end user.

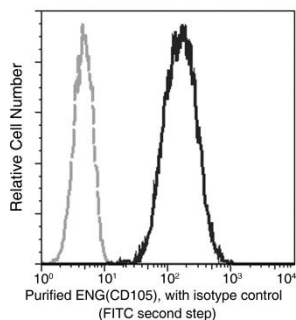
Endoglin / CD105 / ENG Antibody, Rabbit MAb

Catalog Number: 50407-R001



Sino Biological
Biological Solution Specialist

EliteRmab® is a registered trademark of Sino Biological Inc.



Flow cytometric analysis of Mouse ENG(CD105) expression on bEnd.3 cells. Cells were stained with purified anti-Mouse ENG(CD105), then a FITC-conjugated second step antibody. The fluorescence histograms were derived from gated events with the forward and side light-scatter characteristics of intact cells.

Flow cytometry was performed on a BD FACSCalibur flow cytometry system. Please refer to www.sinobiological.com/Flow-Cytometry-FACS-Protocols-a-750.html for technical protocols.