

Mouse LRIG1 / LIG-1 Protein (His Tag)

Catalog Number: 50511-M08H



Sino Biological
Biological Solution Specialist

General Information

Gene Name Synonym:

D6Bwg0781e; limg; LIG-1

Protein Construction:

A DNA sequence encoding the extracellular domain of mouse LRIG1 (NP_032403.2) (Met 1-Thr 794) was expressed, with a polyhistidine tag at the C-terminus.

Source: Mouse

Expression Host: HEK293 Cells

QC Testing

Purity: > 95 % as determined by SDS-PAGE

Endotoxin:

< 1.0 EU per µg of the protein as determined by the LAL method

Stability:

Samples are stable for up to twelve months from date of receipt at -70 °C

Predicted N terminal: Ala 35

Molecular Mass:

The recombinant mouse LRIG1 consists of 771 amino acids and has a predicted molecular mass of 85 kDa. In SDS-PAGE under reducing conditions, the apparent molecular mass of rm LRIG1 is approximately 90-100 kDa due to glycosylation.

Formulation:

Lyophilized from sterile PBS, pH 7.4

Normally 5 % - 8 % trehalose, mannitol and 0.01% Tween80 are added as protectants before lyophilization. Specific concentrations are included in the hardcopy of COA. Please contact us for any concerns or special requirements.

Usage Guide

Storage:

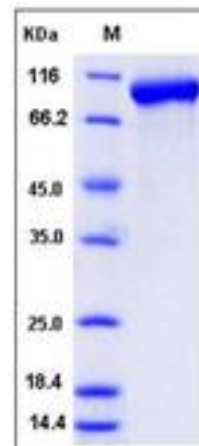
Store it under sterile conditions at -20°C to -80°C upon receiving. Recommend to aliquot the protein into smaller quantities for optimal storage.

Avoid repeated freeze-thaw cycles.

Reconstitution:

Detailed reconstitution instructions are sent along with the products.

SDS-PAGE:



References

1.Shattuck DL, *et al.* (2007) LRIG1 Is a Novel Negative Regulator of the Met Receptor and Opposes Met and Her2 Synergy. *Mol Cell Biol.* 27 (5): 1934-46. 2.Ledda F, *et al.* (2008) Lrig1 is an endogenous inhibitor of Ret receptor tyrosine kinase activation, downstream signaling, and biological responses to GDNF. *J Neurosci.* 28(1): 39-49. 3.Hedman H, *et al.* (2002) Is LRIG1 a tumour suppressor gene at chromosome 3p14.3 *Acta Oncol.* 41(4): 352-4.

Manufactured By Sino Biological Inc., FOR RESEARCH USE ONLY. NOT FOR USE IN HUMANS.

For US Customer: Fax: 267-657-0217 • Tel: 215-583-7898

Global Customer: Fax :+86-10-5862-8288 • Tel:+86-400-890-9989 • <http://www.sinobiological.com>