

METAP2 / MAP2 Antibody, Rabbit PAb, Antigen Affinity Purified



Sino Biological
Biological Solution Specialist

Catalog Number: 50528-RP02

GENERAL INFORMATION	
Immunogen:	Recombinant Mouse METAP2 / MAP2 protein (Catalog#50528-M08B)
Preparation	Produced in rabbits immunized with purified, recombinant Mouse METAP2 / MAP2 (rM METAP2 / MAP2; Catalog#50528-M08B; O08663; Ala2-Tyr478). METAP2 / MAP2 specific IgG was purified by Mouse METAP2 / MAP2 affinity chromatography.
Ig Type:	Rabbit IgG
Specificity:	Mouse METAP2 / MAP2
Formulation:	0.2 µm filtered solution in PBS
Storage:	This antibody can be stored at 2°C-8°C for one month without detectable loss of activity. Antibody products are stable for twelve months from date of receipt when stored at -20°C to -80°C. Preservative-Free. Sodium azide is recommended to avoid contamination (final concentration 0.05%-0.1%). It is toxic to cells and should be disposed of properly. Avoid repeated freeze-thaw cycles.
APPLICATIONS	
Applications:	WB,ELISA,IHC-P,IP
RECOMMENDED CONCENTRATION	
IHC-P	IHC-P: 1:500-1:2000
Western Blot	WB: 1:500-1:2000
Immunoprecipitation	IP: 1-4 µL/mg of lysate
ELISA	ELISA: 1:5000-1:10000 This antibody can be used at 1:5000-1:10000 with the appropriate secondary reagents to detect Mouse METAP2 / MAP2.

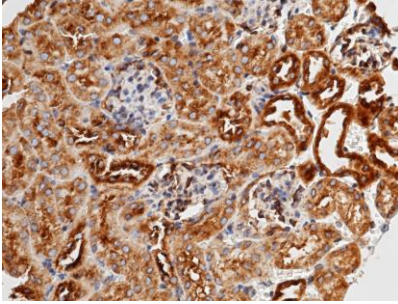
Please Note: Optimal concentrations/dilutions should be determined by the end user.

METAP2 / MAP2 Antibody, Rabbit PAb, Antigen Affinity Purified

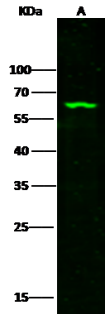


Sino Biological
Biological Solution Specialist

Catalog Number: 50528-RP02



Immunohistochemical staining of mouse METAP2 in mouse kidney with rabbit polyclonal antibody (1:1000, formalin-fixed paraffin embedded sections).



Anti-METAP2 rabbit polyclonal antibody at 1:500 dilution
Lane A: HepG2 Whole Cell Lysate

Lysates/proteins at 30 µg per lane.
Secondary
Goat Anti-Rabbit IgG H&L (Dylight800) at 1/10000 dilution.

Developed using the Odyssey technique.
Performed under reducing conditions.

Predicted band size: 52 kDa
Observed band size: 63 kDa



Mouse METAP2 was immunoprecipitated using:
Lane A: 0.5 mg HepG2 Whole Cell Lysate

2 µL anti-Mouse METAP2 rabbit polyclonal antibody and 15 µl of 50 % Protein G agarose.

Primary antibody:
Anti-Mouse METAP2 rabbit polyclonal antibody, at 1:100 dilution

Secondary antibody:
Clean-Blot® IP Detection Reagent (HRP) at 1:1000 dilution

Developed using the DAB staining technique.
Performed under reducing conditions.

Predicted band size: 52 kDa
Observed band size: 72 kDa