

Mouse Ephrin-B1 / EFNB1 Protein (Fc Tag)

Catalog Number: 50580-M02H



Sino Biological
Biological Solution Specialist

General Information

Gene Name Synonym:

Cek5-L; EFL-3; Elk-L; Epl2; Eplg2; LERK-2; Lerk2; Stra1

Protein Construction:

A DNA sequence encoding the mouse EFNB1 (NP_034240.1) extracellular domain (Met 1-Ser 229) was as fused with the Fc region of human IgG1 at the C-terminus.

Source: Mouse

Expression Host: HEK293 Cells

QC Testing

Purity: > 85 % as determined by SDS-PAGE

Bio Activity:

Measured by its binding ability in a functional ELISA . Immobilized mouse EphB3 at 2 µg/ml (100 µl/well) can bind mouse EFNB1 with a linear range of 0.1-12.5 ng/ml .

Endotoxin:

< 1.0 EU per µg of the protein as determined by the LAL method

Stability:

Samples are stable for up to twelve months from date of receipt at -70 °C

Predicted N terminal: Lys 30

Molecular Mass:

The recombinant mouse EFNB1/Fc is a disulfide-linked homodimer. The reduced monomer consists of 441 amino acids and has a predicted molecular mass of 49 kDa. In SDS-PAGE under reducing conditions, the apparent molecular mass of mEFNB1/Fc monomer is approximately 60 kDa due to glycosylation.

Formulation:

Lyophilized from sterile PBS, pH 7.4

Normally 5 % - 8 % trehalose, mannitol and 0.01% Tween80 are added as protectants before lyophilization. Specific concentrations are included in the hardcopy of COA. Please contact us for any concerns or special requirements.

Usage Guide

Storage:

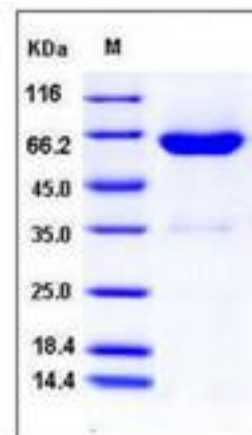
Store it under sterile conditions at -20°C to -80°C upon receiving. Recommend to aliquot the protein into smaller quantities for optimal storage.

Avoid repeated freeze-thaw cycles.

Reconstitution:

Detailed reconstitution instructions are sent along with the products.

SDS-PAGE:



Protein Description

Ephrin-B1 also known as EFNB1, is a member of the ephrin family. The transmembrane-associated ephrin ligands and their Eph family of receptor tyrosine kinases are expressed by cells of the SVZ. Eph/ephrin interactions are implicated in axon guidance, neural crest cell migration, establishment of segmental boundaries, and formation of angiogenic capillary plexi. Eph receptors and ephrins are divided into two subclasses, A and B, based on binding specificities. Ephrin subclasses are further distinguished by their mode of attachment to the plasma membrane: ephrin-A ligands bind EphA receptors and are anchored to the plasma membrane via a glycosylphosphatidylinositol (GPI) linkage, whereas ephrin-B ligands bind EphB receptors and are anchored via a transmembrane domain. An exception is the EphA4 receptor, which binds both subclasses of ephrins. EphrinB1 and B class Eph receptors provide positional cues required for the normal morphogenesis of skeletal elements. Another malformation, preaxial polydactyly, was exclusively seen in heterozygous females in which expression of the X-linked ephrinB1 gene was mosaic, so that ectopic EphB-ephrinB1 interactions led to restricted cell movements and the bifurcation of digital rays.

References

1. Davy A, *et al.* (2004) Ephrin-B1 forward and reverse signaling are required during mouse development. *Genes Dev.* 18(5): 572-83.
2. Compagni A, *et al.* (2003) Control of skeletal patterning by ephrinB1-EphB interactions. *Dev Cell.* 5(2): 217-30.
3. Wieland I, *et al.* (2004) Mutations of the ephrin-B1 gene cause craniofrontonasal syndrome. *Am J Hum Genet.* 74(6): 1209-15.

Manufactured By Sino Biological Inc., FOR RESEARCH USE ONLY. NOT FOR USE IN HUMANS.

For US Customer: Fax: 267-657-0217

• Tel: 215-583-7898

Global Customer: Fax :+86-10-5862-8288

• Tel:+86-400-890-9989

• <http://www.sinobiological.com>