

Mouse Cd52 / CDw52 Protein (Fc Tag)



Sino Biological
Biological Solution Specialist

Catalog Number: 50721-M02H

General Information

Gene Name Synonym:

AI463198; B7; B7-Ag; CAMPATH-1; CLS1; MB7

Protein Construction:

A DNA sequence encoding the mouse Cd52 (NP_038734.1) (Met1-Lys46) was expressed with the Fc region of human IgG1 at the C-terminus.

Source: Mouse

Expression Host: HEK293 Cells

QC Testing

Purity: > 95 % as determined by SDS-PAGE.

Endotoxin:

< 1.0 EU per µg protein as determined by the LAL method.

Stability:

Samples are stable for up to twelve months from date of receipt at -70 °C

Predicted N terminal: Gly 24

Molecular Mass:

The recombinant mouse Cd52 consists 261 amino acids and predicts a molecular mass of 29 kDa.

Formulation:

Lyophilized from sterile PBS, pH 7.4.

Normally 5 % - 8 % trehalose, mannitol and 0.01% Tween80 are added as protectants before lyophilization. Specific concentrations are included in the hardcopy of COA. Please contact us for any concerns or special requirements.

Usage Guide

Storage:

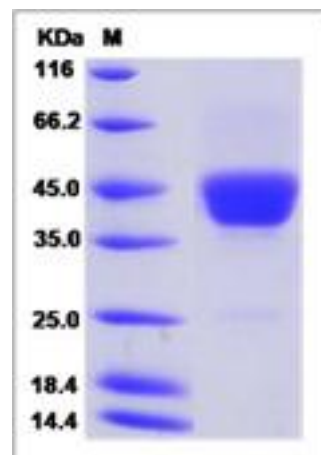
Store it under sterile conditions at -20°C to -80°C upon receiving. Recommend to aliquot the protein into smaller quantities for optimal storage.

Avoid repeated freeze-thaw cycles.

Reconstitution:

Detailed reconstitution instructions are sent along with the products.

SDS-PAGE:



Protein Description

CD52 / CDW52 is a small glycosylphosphatidylinositol (GPI) anchored glycoprotein. It has a mature peptide comprising only 12 amino acids and is abundantly expressed on human lymphocytes. From the clinical point of view this protein is an important target for therapeutic interventions aimed at leukocyte depletion in hematological malignancies and post-transplant immunosuppression. CD52 / CDW52 may play a role in carrying and orienting carbohydrate. It is an unusually good target for complement-mediated cell lysis.

References

3.Piccaluga PP, *et al.* (2007) Expression of CD52 in peripheral T-cell lymphoma. *Haematologica*. 92(4): 566-7.

Manufactured By Sino Biological Inc., FOR RESEARCH USE ONLY. NOT FOR USE IN HUMANS.

For US Customer: Fax: 267-657-0217

• Tel: 215-583-7898

Global Customer: Fax :+86-10-5862-8288

• Tel:+86-400-890-9989

• <http://www.sinobiological.com>