



Catalog Number: 50813-R048

EliteRmab® is a registered trademark of Sino Biological Inc.

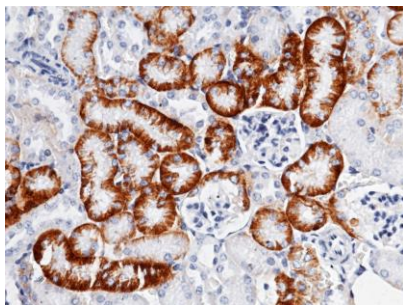
GENERAL INFORMATION	
Immunogen:	Recombinant Mouse SLC3A2 protein (Catalog#50813-M07H)
Preparation	This antibody was obtained from a rabbit immunized with purified, recombinant Mouse SLC3A2 (rM SLC3A2; Catalog#50813-M07H; NP_001154885.1; Ala139-Ala565).
Ig Type:	Rabbit IgG
Clone ID:	048
Specificity:	Mouse SLC3A2
	No cross-reactivity in ELISA with Human SLC3A2
Formulation:	0.2 µm filtered solution in PBS
Storage:	This antibody can be stored at 2°C-8°C for one month without detectable loss of activity. Antibody products are stable for twelve months from date of receipt when stored at -20°C to -80°C. Preservative-Free. Sodium azide is recommended to avoid contamination (final concentration 0.05%-0.1%). It is toxic to cells and should be disposed of properly. Avoid repeated freeze-thaw cycles.
APPLICATIONS	
Applications:	IHC-P
RECOMMENDED CONCENTRATION	
IHC-P	IHC-P: 1:100-1:500

**Please Note: Optimal concentrations/dilutions should be determined by the end user.**



Catalog Number: 50813-R048

EliteRmab® is a registered trademark of Sino Biological Inc.



Immunohistochemical staining of mouse SLC3A2 in mouse kidney with rabbit monoclonal antibody (1:200, formalin-fixed paraffin embedded sections). Positive staining was localized to nephric tubule.