

IL-1 beta Antibody, Rabbit PAb, Antigen Affinity Purified



Sino Biological
Biological Solution Specialist

Catalog Number: 70018-T48

GENERAL INFORMATION	
Immunogen:	Recombinant Canine IL-1 beta protein (Catalog#70018-DNAE)
Preparation	Produced in rabbits immunized with purified, recombinant Canine IL-1 beta (Catalog#70018-DNAE; Q28292; Ala115-Ser266). IL-1 beta specific IgG was purified by Canine IL-1 beta affinity chromatography.
Ig Type:	Rabbit IgG
Specificity:	Canine IL-1 beta
Formulation:	0.2 µm filtered solution in PBS
Storage:	This antibody can be stored at 2°C-8°C for one month without detectable loss of activity. Antibody products are stable for twelve months from date of receipt when stored at -20°C to -80°C. Preservative-Free. Sodium azide is recommended to avoid contamination (final concentration 0.05%-0.1%). It is toxic to cells and should be disposed of properly. Avoid repeated freeze-thaw cycles.
APPLICATIONS	
Applications:	WB, ELISA
RECOMMENDED CONCENTRATION	
Western Blot	WB: 1:500-1:1000
ELISA	ELISA: 1:25000-1:50000 This antibody can be used at 1:25000-1:50000 with the appropriate secondary reagents to detect Canine IL-1 beta.

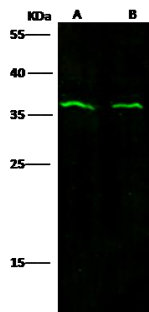
Please Note: Optimal concentrations/dilutions should be determined by the end user.

IL-1 beta Antibody, Rabbit PAb, Antigen Affinity Purified



Sino Biological
Biological Solution Specialist

Catalog Number: 70018-T48



Anti-IL1B rabbit polyclonal antibody at 1:500 dilution

Lane A: Jurkat Whole Cell Lysate

Lane B: 293T Whole Cell Lysate

Lysates/proteins at 30 µg per lane.

Secondary

Goat Anti-Rabbit IgG H&L (Dylight800) at 1/10000 dilution.

Developed using the Odyssey technique.

Performed under reducing conditions.

Predicted band size: 30 kDa

Observed band size: 36 kDa