

Cadherin-6 / CDH6 Antibody, Rabbit PAb, Antigen Affinity Purified



Sino Biological
Biological Solution Specialist

Catalog Number: 80277-T24

GENERAL INFORMATION	
Immunogen:	Recombinant Rat Cadherin-6 / CDH6 Protein (Catalog#80277-R08H)
Preparation	Produced in rabbits immunized with purified, recombinant Rat Cadherin-6 / CDH6 (rR Cadherin-6 / CDH6; Catalog#80277-R08H; EDL82944.1; Met1-Ala615). Cadherin-6 / CDH6 specific IgG was purified by Rat Cadherin-6 / CDH6 affinity chromatography.
Ig Type:	Rabbit IgG
Specificity:	Rat Cadherin-6 / CDH6
Formulation:	0.2 µm filtered solution in PBS
Storage:	This antibody can be stored at 2°C-8°C for one month without detectable loss of activity. Antibody products are stable for twelve months from date of receipt when stored at -20°C to -80°C. Preservative-Free. Sodium azide is recommended to avoid contamination (final concentration 0.05%-0.1%). It is toxic to cells and should be disposed of properly. Avoid repeated freeze-thaw cycles.
APPLICATIONS	
Applications:	ELISA, IHC-P
RECOMMENDED CONCENTRATION	
IHC-P	IHC-P: 1:500-1:2000
ELISA	ELISA: 1:5000-1:10000 This antibody can be used at 1:5000-1:10000 with the appropriate secondary reagents to detect Rat Cadherin-6 / CDH6.

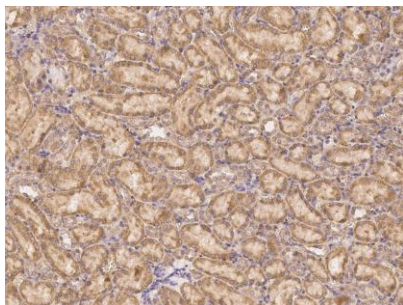
Please Note: Optimal concentrations/dilutions should be determined by the end user.

Cadherin-6 / CDH6 Antibody, Rabbit PAb, Antigen Affinity Purified

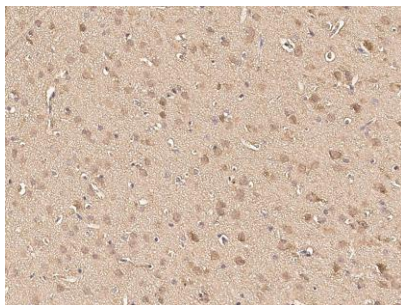


Sino Biological
Biological Solution Specialist

Catalog Number: 80277-T24



Immunohistochemical staining of rat CDH6 in rat kidney with rabbit polyclonal antibody (1:1000, formalin-fixed paraffin embedded sections).



Immunohistochemical staining of rat CDH6 in rat brain with rabbit polyclonal antibody (1:1000, formalin-fixed paraffin embedded sections).