

# Rat Cathepsin S / CTSS Protein (His Tag)

Catalog Number: 80443-R08H



Sino Biological  
Biological Solution Specialist

## General Information

### Gene Name Synonym:

Cathepsin S; CTSS

### Protein Construction:

A DNA sequence encoding the rat Ctss (Met1-Ile318) was expressed with a polyhistidine tag at the C-terminus.

**Source:** Rat

**Expression Host:** HEK293 Cells

## QC Testing

**Purity:** > 90 % as determined by SDS-PAGE.

### Bio-activity:

Measured by its ability to cleave the fluorogenic peptide substrate, Mca-RPKPVENval-WRK (Dnp)-NH<sub>2</sub>, AnaSpec, Catalog # 27114. The specific activity is >300 pmoles/min/μg. (Activation description: The enzyme achieves its activity under acidic pH)

### Endotoxin:

< 1.0 EU per μg protein as determined by the LAL method.

### Stability:

Samples are stable for up to twelve months from date of receipt at -70 °C

**Predicted N terminal:** Met

### Molecular Mass:

The recombinant rat Ctss consists 329 amino acids and predicts a molecular mass of 37.3 kDa.

### Formulation:

Lyophilized from sterile 20 mM Tris, 150 mM NaCl, 10% Glycerol, pH 8.0.

Normally 5 % - 8 % trehalose, mannitol and 0.01% Tween80 are added as protectants before lyophilization. Specific concentrations are included in the hardcopy of COA. Please contact us for any concerns or special requirements.

## Usage Guide

### Storage:

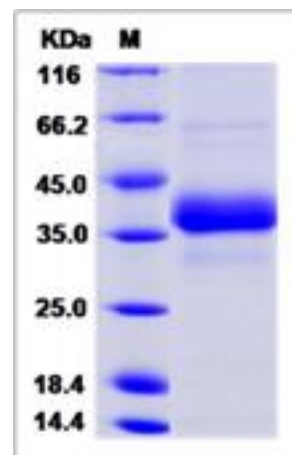
Store it under sterile conditions at -20°C to -80°C upon receiving. Recommend to aliquot the protein into smaller quantities for optimal storage.

**Avoid repeated freeze-thaw cycles.**

### Reconstitution:

Detailed reconstitution instructions are sent along with the products.

## SDS-PAGE:



## Protein Description

Cathepsin S (CTSS), one of the lysosomal proteinases, has many important physiological functions in the nervous system, especially in process of extracellular matrix degradation and endocellular antigen presentation. CTSS is synthesized as inactive precursor of 331 amino acids consisting of a 15-aa signal peptide, a propeptide of 99 aa, and a mature polypeptide of 217 aa. It is activated in the lysosomes by a proteolytic cleavage of the propeptide. Cathepsin S is expressed in the lysosome of antigen presenting cells, primarily dendritic cells, B-cells and macrophages. Compared with other lysosomal cysteine proteases, cathepsin S has displayed some unique characteristics. Cathepsin S is most well known for its critical function in the proteolytic digestion of the invariant chain chaperone molecules, thus controlling antigen presentation to CD4+ T-cells by major histocompatibility complex (MHC) class II molecules or to NK1.1+ T-cells via CD1 molecules. Cathepsin S also appears to participate in direct processing of exogenous antigens for presentation by MHC class II to CD4+ T-cells, or in cross-presentation by MHC class I molecules to CD8+ T-cells. In addition, although direct evidence is still lacking, in its secreted form cathepsin S is implicated in degradation of the extracellular matrix, which may contribute to the pathology of a number of diseases, including arthritis, atherosclerosis, neurological diseases and chronic obstructive pulmonary disease.

## References

- 1.Liu W, *et al.* (2004) Cysteine protease cathepsin S as a key step in antigen presentation. *Drug News Perspect.* 17(6): 357-63.
- 2.Thurmond RL, *et al.* (2005) Cathepsin S inhibitors as novel immunomodulators. *Curr Opin Investig Drugs.* 6(5): 473-82.
- 3.Wang DM, *et al.* (2008) Cathepsin S in pathogenesis of neurological diseases. *Zhejiang Da Xue Xue Bao Yi Xue Ban.* 37(4): 422-6.

Manufactured By Sino Biological Inc., FOR RESEARCH USE ONLY. NOT FOR USE IN HUMANS.

For US Customer: Fax: 267-657-0217 • Tel: 215-583-7898

Global Customer: Fax :+86-10-5862-8288 • Tel:+86-400-890-9989 • <http://www.sinobiological.com>