

# CD160 Antibody, Rabbit PAb, Antigen Affinity Purified



Sino Biological  
Biological Solution Specialist

Catalog Number: 90224-T24

GENERAL INFORMATION	
Immunogen:	Recombinant Rhesus CD160 protein (Catalog#90224-C08H)
Preparation	Produced in rabbits immunized with purified, recombinant Rhesus CD160 (Catalog#90224-C08H; XP_001089019.1; Met1-Leu158). CD160 specific IgG was purified by Rhesus CD160 affinity chromatography.
Ig Type:	Rabbit IgG
Specificity:	Rhesus CD160
Formulation:	0.2 µm filtered solution in PBS
Storage:	This antibody can be stored at 2°C-8°C for one month without detectable loss of activity. Antibody products are stable for twelve months from date of receipt when stored at -20°C to -80°C. Preservative-Free. Sodium azide is recommended to avoid contamination (final concentration 0.05%-0.1%). It is toxic to cells and should be disposed of properly. Avoid repeated freeze-thaw cycles.
APPLICATIONS	
Applications:	ELISA,IHC-P
RECOMMENDED CONCENTRATION	
IHC-P	IHC-P: 1:2500-1:10000
ELISA	ELISA: 1:5000-1:10000 This antibody can be used at 1:5000-1:10000 with the appropriate secondary reagents to detect Rhesus CD160.

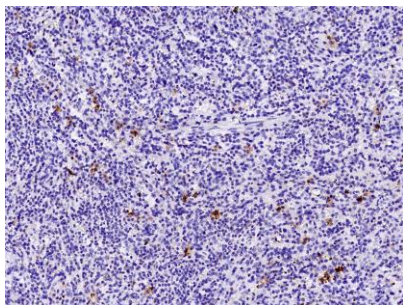
**Please Note: Optimal concentrations/dilutions should be determined by the end user.**

# CD160 Antibody, Rabbit PAb, Antigen Affinity Purified

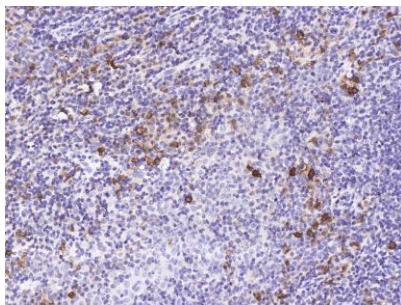
Catalog Number: 90224-T24



Sino Biological  
Biological Solution Specialist



Immunochemical staining of Rhesus CD160 in Rhesus spleen with rabbit polyclonal antibody (1:5000, formalin-fixed paraffin embedded sections).



Immunochemical staining of Rhesus CD160 in Rhesus tonsil with rabbit polyclonal antibody (1:2000, formalin-fixed paraffin embedded sections).