

# IL6ST / gp130 / CD130 Antibody, Rabbit PAb, Antigen Affinity Purified



Sino Biological  
Biological Solution Specialist

Catalog Number: 90275-T10

## GENERAL INFORMATION

<b>Immunogen:</b>	Recombinant Rhesus IL6ST / gp130 / CD130 Protein (Catalog#90275-C08H)
<b>Preparation</b>	Produced in rabbits immunized with purified, recombinant Rhesus IL6ST / gp130 / CD130 ( Catalog#90275-C08H; NP_001252920.1; Met1-Ile681). IL6ST / gp130 / CD130 specific IgG was purified by Rhesus IL6ST / gp130 / CD130 affinity chromatography.
<b>Ig Type:</b>	Rabbit IgG
<b>Specificity:</b>	Rhesus IL6ST / gp130 / CD130
<b>Formulation:</b>	0.2 µm filtered solution in PBS
<b>Storage:</b>	This antibody can be stored at 2°C-8°C for one month without detectable loss of activity. Antibody products are stable for twelve months from date of receipt when stored at -20°C to -80°C. Preservative-Free. Avoid repeated freeze-thaw cycles.
<b>Alternative Names:</b>	gp130,IL6ST

## APPLICATIONS

<b>Applications:</b>	IHC-P,ICC/IF
----------------------	--------------

## RECOMMENDED CONCENTRATION

<b>IHC-P</b>	IHC-P: 1:500-1:2000
<b>ICC/IF</b>	ICC/IF: 1:300-1:10000

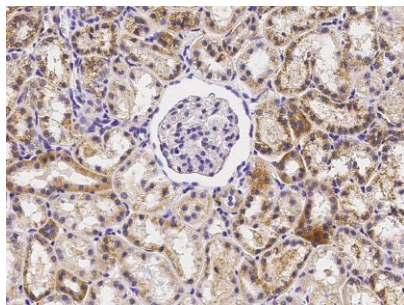
**Please Note:** Optimal concentrations/dilutions should be determined by the end user.

# IL6ST / gp130 / CD130 Antibody, Rabbit PAb, Antigen Affinity Purified

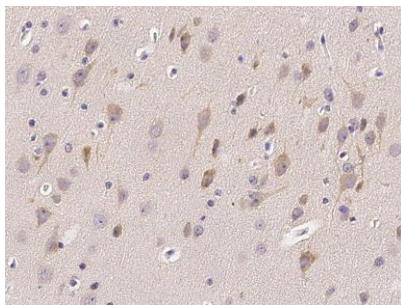
Catalog Number: 90275-T10



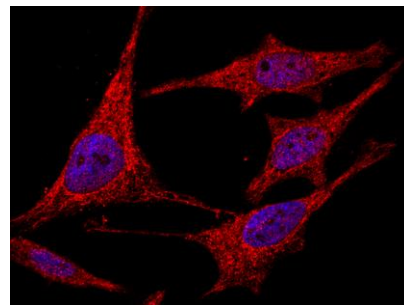
Sino Biological  
Biological Solution Specialist



Immunohistochemical staining of Rhesus IL6ST in Rhesus kidney with rabbit polyclonal antibody (1:1000, formalin-fixed paraffin embedded sections).



Immunohistochemical staining of Rhesus IL6ST in Rhesus brain with rabbit polyclonal antibody (1:1000, formalin-fixed paraffin embedded sections).



Immunofluorescence staining of IL6ST in HeLa cells. Cells were fixed with 4% PFA, blocked with 10% serum, and incubated with rabbit anti-Rhesus IL6ST polyclonal antibody (1:1000) at 4°C overnight. Then cells were stained with the Alexa Fluor®594-conjugated Goat Anti-rabbit IgG secondary antibody (red). Positive staining was localized to cytoplasm and nucleus.