

# Rhesus IL-12 (IL12A & IL12B Heterodimer) Protein

Catalog Number: CT045-C08H



Sino Biological  
Biological Solution Specialist

## General Information

### Gene Name Synonym:

IL12A & IL12B

### Protein Construction:

A DNA sequence encoding the rhesus IL12A (NP\_001038199.1) (Met1-Ser219) was fused with a polyhistidine tag at the C-terminus, constructed the plasmid 1; A DNA sequence encoding the rhesus IL12B (NP\_001038190.1) (Met1-Ser328) was expressed with a polyhistidine tag at the C-terminus, constructed the plasmid 2. The two plasmids were co-expressed and the rhesus IL12A & the rhesus IL12B heterodimer was purified.

**Source:** Rhesus

**Expression Host:** HEK293 Cells

## QC Testing

**Purity:** > 95 % as determined by SDS-PAGE

### Bio Activity:

Measured by its ability to induce Interferon gamma secretion by human natural killer lymphoma NK-92 cells. The ED50 for this effect is typically 0.2-2ng/mL.

### Endotoxin:

< 1.0 EU per µg of the protein as determined by the LAL method

**Predicted N terminal:** Arg 23 & Ile 23

### Molecular Mass:

The recombinant rhesus IL12A & the rhesus IL12B comprises 525(208+317) amino acids and has a calculated molecular mass of 60.2(24+36.2) KDa.

### Formulation:

Lyophilized from sterile PBS, pH 7.4.

Normally 5 % - 8 % trehalose, mannitol and 0.01% Tween80 are added as protectants before lyophilization. Specific concentrations are included in the hardcopy of COA. Please contact us for any concerns or special requirements.

## Usage Guide

### Stability & Storage:

Samples are stable for twelve months from date of receipt at -20°C to -80°C.

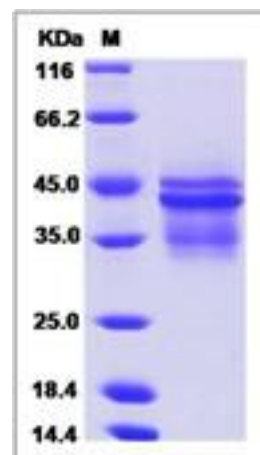
Store it under sterile conditions at -20°C to -80°C upon receiving. Recommend to aliquot the protein into smaller quantities for optimal storage.

**Avoid repeated freeze-thaw cycles.**

### Reconstitution:

Detailed reconstitution instructions are sent along with the products.

## SDS-PAGE:



**For Research Use Only. Not for use in diagnostic or therapeutic procedures.**

**Tel:** +86-400-890-9989 (Global), +1-215-583-7898 (USA), +49(0)6196 9678656 (Europe)

**Website:** <http://www.sinobiological.com>