

# Human IL-12 Protein (IL12A & IL12B Heterodimer) Protein (His Tag)

Catalog Number: CT050-H08H



Sino Biological  
Biological Solution Specialist

## General Information

### Gene Name Synonym:

CLMF; CLMF2; IL-12A; IL-12B; IL12; IL12 p70; IMD28; IMD29; NFSK; NKSF; NKSF1; NKSF2; P35

### Protein Construction:

A DNA sequence encoding the human IL12 complex composed of IL12B (NP\_002178.2) (Met1-Ser328) and the mature form of human IL12A (P29459-1) (Arg23-Ser219) linked by a polypeptide linker was fused with a polyhistidine tag at the C-terminus.

**Source:** Human

**Expression Host:** HEK293 Cells

## QC Testing

**Purity:** > 95 % as determined by SDS-PAGE.

### Bio-activity:

1. Measured by its ability to induce Interferon gamma secretion by human natural killer lymphoma NK-92 cells. The ED50 for this effect is 0.2-2 ng/mL.
2. Recombinant Human IL12RB1 Protein (ECD, Fc Tag) (Cat: 11674-H02H) captured on Protein A chip, can bind Recombinant Human IL-12 (IL12A&IL12B Heterodimer) Protein (His Tag) (Cat: CT050-H08H) with an affinity constant of 4.108 nM as determined in an SPR assay (Biacore T200) (Routinely tested).
3. Immobilized Recombinant Human IL-12 (IL12A&IL12B Heterodimer) Protein (His Tag) (Cat: CT050-H08H) at 0.5 µg/mL (100 µL/well) can bind Anti-IL-12 & IL-23 (P40) (Research Grade Ustekin\* mab Biosimilar), the EC50 is 1.0-4.0 ng/mL (Routinely tested).

### Endotoxin:

< 1.0 EU per µg protein as determined by the LAL method.

### Stability:

Samples are stable for up to twelve months from date of receipt at -70 °C

**Predicted N terminal:** Ile 23

### Molecular Mass:

The recombinant human consists 529 amino acids and predicts a molecular mass of 59.6 kDa.

### Formulation:

Lyophilized from sterile PBS, pH 7.4

Normally 5 % - 8 % trehalose, mannitol and 0.01% Tween80 are added as protectants before lyophilization. Specific concentrations are included in the hardcopy of COA. Please contact us for any concerns or special requirements.

## Usage Guide

### Storage:

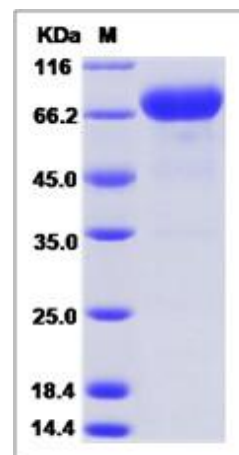
Store it under sterile conditions at -20°C to -80°C upon receiving. Recommend to aliquot the protein into smaller quantities for optimal storage.

Avoid repeated freeze-thaw cycles.

### Reconstitution:

Detailed reconstitution instructions are sent along with the products.

### SDS-PAGE:



**Manufactured By Sino Biological Inc., FOR RESEARCH USE ONLY. NOT FOR USE IN HUMANS.**

**For US Customer:** Fax: 267-657-0217 • Tel: 215-583-7898

**Global Customer:** Fax :+86-10-5862-8288 • Tel:+86-400-890-9989 • <http://www.sinobiological.com>