



Sino Biological  
Biological Solution Specialist

---

# Human Cystatin SA / CST2 ELISA Pair Set

**Catalog Number : SEK11567**  
**Lot Number: KW17MY3101**

To achieve the best assay results, this manual must be read carefully before using this product and the assay is run as summarized in the General ELISA protocol.

## BACKGROUND

Cystatin-SA, also known as Cystatin-2, Cystatin-S5 and CST2, is a secreted protein which belongs to the cystatin family. Cystatin-2 / CST2 is expressed in submandibular and sublingual saliva but not in parotid saliva (at protein level). It is also expressed in submandibular gland and parotid gland. The cystatin superfamily encompasses proteins that contain multiple cystatin-like sequences. Some of the members are active cysteine protease inhibitors, while others have lost or perhaps never acquired this inhibitory activity. There are three inhibitory families in the superfamily, including the type 1 cystatins (stefins), type 2 cystatins and the kininogens. The type 2 cystatin proteins are a class of cysteine proteinase inhibitors found in a variety of human fluids and secretions, where they appear to provide protective functions. The CST1, CST2, CST4, and CST5 are expressed in differential, tissue-specific patterns. Expression of CST2 and CST5 is restricted to the submandibular and parotid glands, while CST1 and CST4 are expressed in these tissues and in the lacrimal gland.

## PRINCIPLE OF THE TEST

This ELISA Pair Set contains the basic components required for the development of sandwich ELISAs. The Sino Biological ELISA Pair Set is a solid phase sandwich ELISA (Enzyme-Linked Immunosorbent Assay). It utilizes a monoclonal antibody specific for Cystatin SA / CST2 coated on a 96-well plate. Standards and samples are added to the wells, and any Cystatin SA / CST2 present binds to the immobilized antibody. The wells are washed and a horseradish peroxidase conjugated rabbit anti-Cystatin SA / CST2 monoclonal antibody is then added, producing an antibody-antigen-antibody "sandwich". The wells are again washed and TMB substrate solution is loaded, which produces color in proportion to the amount of Cystatin SA / CST2 present in the sample. To end the enzyme reaction, the stop solution is added and absorbances of the microwell are read at 450 nm.

## INTENDED USE

- ◆ The Human Cystatin SA / CST2 ELISA Pair Set is for the quantitative determination of Human Cystatin SA / CST2.
- ◆ This ELISA Pair Set contains the basic components required for the development of sandwich ELISAs.

## ASSAY PROCEDURE SUMMARY



**This Pair Set has been configured for research use only and is not to be used in diagnostic procedures.**

## MATERIALS PROVIDED

**Bring all reagents to room temperature before use.**

**Capture Antibody** – 1.0 mg/mL of rabbit anti-CST2 monoclonal antibody (in PBS, pH 7.4). Dilute to a working concentration of 1 µg/mL in PBS before coating. (Catalog: # 11567-R005)

**Detection Antibody** – 0.2 mg/mL rabbit anti-CST2 monoclonal antibody conjugated to horseradish-peroxidase (HRP) (in PBS, 50 % HRP-Protector, pH 7.4, store at 4°C). Dilute to working concentration of 0.4 µg/mL in dilution buffer before use. (Catalog: # 11567-R016)

**Standard** – The minimum detectable dose of Human Cystatin SA / CST2 was determined to be approximately 9.375 pg/ml. This is defined as at least three times standard deviations above the mean optical density of 10 replicates of the zero standard.

*Standard reconstitution tips: Add dilution buffer, gently mix it up and down 3~5 times. Avoid violent and long-time shock.*

## SOLUTIONS REQUIRED

**PBS** - 136.9 mM NaCl, 10.1 mM Na<sub>2</sub>HPO<sub>4</sub>, 2.7 mM KCl, 1.8 mM KH<sub>2</sub>PO<sub>4</sub>, pH 7.4, 0.2 µm filtered

**Wash Buffer** - 0.05% Tween20 in PBS, pH 7.2 - 7.4

**Blocking Buffer** - 2% BSA in Wash Buffer

**Dilution Buffer** - 0.1% BSA in wash buffer, pH 7.2 - 7.4, 0.2 µm filtered

**Substrate Solution** : To achieve best assay results, fresh substrate solution is recommended

**Substrate stock solution** - 10mg / ml TMB ( Tetramethylbenzidine ) in DMSO

**Substrate dilution buffer** - 0.05M Na<sub>2</sub>HPO<sub>4</sub> and 0.025M citric acid ; adjust pH to 5.5

**Substrate working solution** - For each plate dilute 250 µl substrate stock solution in 25ml substrate dilution buffer and then add 80 µl 0.75% H<sub>2</sub>O<sub>2</sub> , mix it well

**Stop Solution** - 2 N H<sub>2</sub>SO<sub>4</sub>

## PRECAUTION

The Stop Solution suggested for use with this Pair Set is an acid solution. Wear eye, hand, face, and clothing protection when using this material.

## STORAGE

**Capture Antibody:** Aliquot and store at -20°C to -80°C for up to 6 months from date of receipt. Avoid repeated freeze-thaw cycles.

**Detection Antibody:** Store at 4°C and protect it from prolonged exposure to light for up to 6 months from date of receipt. **DO NOT FREEZE!**

**Standard:** Store lyophilized standard at -20°C to -80°C for up to 6 months from date of receipt. Aliquot and store the reconstituted standard at -80°C for up to 1 month. Avoid repeated freeze-thaw cycles.

## GENERAL ELISA PROTOCOL

### Plate Preparation

1. Dilute the capture antibody to the working concentration in PBS. Immediately coat a 96-well microplate with 100 $\mu$ L per well of the diluted capture antibody. Seal the plate and incubate overnight at 4°C.
2. Aspirate each well and wash with at least 300 $\mu$ L wash buffer, repeating the process two times for a total of three washes. Complete removal of liquid at each step is essential for good performance. After the last wash, remove any remaining wash buffer by inverting the plate and blotting it against clean paper towels.
3. Block plates by adding 300  $\mu$ L of blocking buffer to each well. Incubate at room temperature for a minimum of 1 hour.
4. Repeat the aspiration/wash as in step 2. The plates are now ready for sample addition.

### Assay Procedure

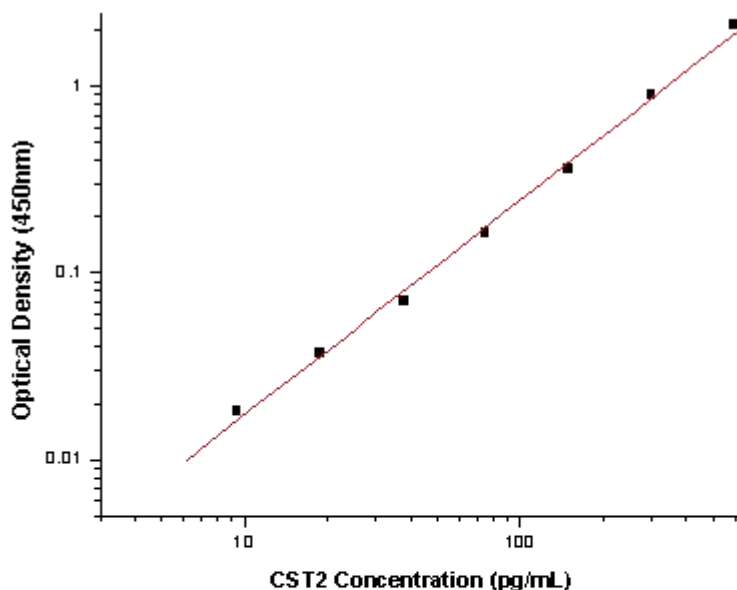
1. Add 100  $\mu$ L of sample or standards in Dilution Buffer per well. Seal the plate and incubate 2 hours at room temperature.
2. Repeat the aspiration/wash as in step 2 of plate preparation.
3. Add 100  $\mu$ L of the detection antibody, diluted in Dilution Buffer, to each well. Seal the plate and incubate 1 hour at room temperature.
4. Repeat the aspiration/wash as in step 2 of plate preparation.
5. Add 200  $\mu$ L of substrate solution to each well. Incubate for 20 minutes at room temperature ( **if substrate solution is not as requested, the incubation time should be optimized** ). Avoid placing the plate in direct light.
6. Add 50  $\mu$ L of stop solution to each well. Gently tap the plate to ensure thorough mixing.
7. Determine the optical density of each well immediately, using a microplate reader set to 450 nm.

### CALCULATION OF RESULTS

- Calculate the mean absorbance for each set of duplicate standards, controls and samples. Subtract the mean zero standard absorbance from each.
- Construct a standard curve by plotting the mean absorbance for each standard on the y-axis against the concentration on the x-axis and draw a best fit curve through the points on the graph.
- To determine the concentration of the unknowns, find the unknowns' mean absorbance value on the y-axis and draw a horizontal line to the standard curve. At the point of intersection, draw a vertical line to the x-axis and read the concentration. If samples have been diluted, the concentration read from the standard curve must be multiplied by the dilution factor.
- Alternatively, computer-based curve-fitting statistical software may also be employed to calculate the concentration of the sample.

## TYPICAL DATA

This standard curve is only for demonstration purposes. A standard curve should be generated for each assay.



Concentration ( pg/mL)	Zero standard subtracted OD
0	0
9.38	0.018
18.8	0.037
38	0.071
75	0.164
150	0.361
300	0.891
600	2.121

## PERFORMANCE CHARACTERISTIC

### SENSITIVITY

The minimum detectable dose of Human Cystatin SA / CST2 was determined to be approximately 9.38 pg/ml. This is defined as at least three times standard deviations above the mean optical density of 10 replicates of the zero standard.

## TROUBLE SHOOTING

Problems	Possible Sources	Solutions
<b>No signal</b>	Incorrect or no Detection Antibody was added	Add appropriate Detection Antibody and continue
	Substrate solution was not added	Add substrate solution and continue
	Incorrect storage condition	Check if the kit is stored at recommended condition and used before expiration date
<b>Poor Standard Curve</b>	Standard was incompletely reconstituted or was inappropriately stored	Aliquot reconstituted standard and store at -80 °C
	Imprecise / inaccurate pipetting	Check / calibrate pipettes
	Incubations done at inappropriate temperature, timing or agitation	Follow the general ELISA protocol
	Background wells were contaminated	Avoid cross contamination by using the sealer appropriately
<b>Poor detection value</b>	The concentration of antigen in samples was too low	Enriching samples to increase the concentration of antigen
	Samples were ineffective	Check if the samples are stored at cold environment. Detect samples in timely manner
<b>High Background</b>	Insufficient washes	Use multichannel pipettes without touching the reagents on the plate
		Increase cycles of washes and soaking time between washes
	TMB Substrate Solution was contaminated	TMB Substrate Solution should be clear and colorless prior to addition to wells
	Materials were contaminated.	Use clean plates, tubes and pipettes tips
<b>Non-specificity</b>	Samples were contaminated	Avoid cross contamination of samples
	The concentration of samples was too high	Try higher dilution rate of samples



ELISA Plate Template												
	1	2	3	4	5	6	7	8	9	10	11	12
A												
B												
C												
D												
E												
F												
G												
H												

**Human Cystatin SA / CST2 ELISA Pair Set**

**Notes**