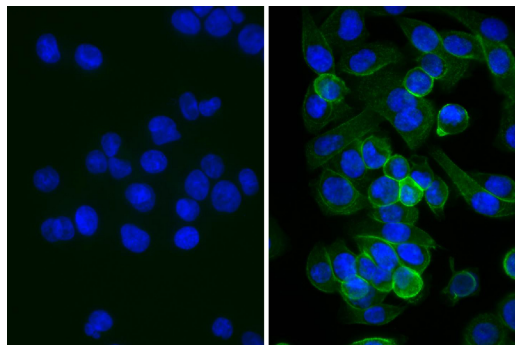




Normal Rabbit Serum

Cat. No.	Format	Size
0040-01	Serum	5 mL



Human pancreatic carcinoma cell line MIA PaCa-2 was blocked with Normal Rabbit Serum (SB Cat. No. 0040-01) and stained with Mouse Anti-Human CD44-UNLB (SB Cat. No. 9400-01; right) followed by Rabbit Anti-Mouse IgG(H+L), Human ads-BIOT (SB Cat. No. 6175-08) and then Streptavidin-FITC (SB Cat. No. 7100-02) and DAPI.

Description

Source	Adult New Zealand rabbits
Purification	Processed to minimize hemolysis and 0.2 µm filtered

Applications

Referenced applications include –

Block ^{1,6}
Control ²⁻⁵
IHC-FS ⁶
IHC-PS ^{3,4}
IHC-WM ¹
ICC ⁶
IP ^{2,5}

Handling and Storage

- The serum is supplied as 5 mL with < 0.1% NaN₃ as a preservative. Store at 2-8°C or aliquot and store at or below -20°C for long-term storage.
- Reagent is stable for the period shown on the label if stored as directed.

Warning

Reagent contains sodium azide. Please refer to product specific SDS.

References

- Lämmermann T, Afonso PV, Angermann BR, Wang JM, Kastenmüller W, Parent CA, et al. Neutrophil swarms require LTB4 and integrins at sites of cell death in vivo. *Nature*. 2013;498:371-5. (Block, IHC-WM)
- Peng S, Chen L, Lei X, Yang L, Lin H, Carmichael GG, et al. Genome-wide studies reveal that Lin28 enhances the translation of genes important for growth and survival of human embryonic stem cells. *Stem Cells*. 2011;29:496-504. (Control, IP)
- Peng S, Maihle NJ, Huang Y. Pluripotency factors Lin28 and Oct4 identify a sub-population of stem cell-like cells in ovarian cancer. *Oncogene*. 2010;29:2153-9. (Control, IHC-PS)
- Feng C, Neumeister V, Ma W, Xu J, Lu L, Bordeaux J, et al. Lin28 regulates HER2 and promotes malignancy through multiple mechanisms. *Cell Cycle*. 2012;11:2486-94. (Control, IHC-PS)
- Qiu C, Ma Y, Wang J, Peng S, Huang Y. Lin28-mediated post-transcriptional regulation of Oct4 expression in human embryonic stem cells. *Nucleic Acids Res*. 2009;38:1240-8. (Control, IP)
- SouthernBiotech published data (Block, IHC-FS, ICC)

For Research Use Only. Not for Diagnostic or Therapeutic Use.

TB0040
01-Apr-24

Corporate Offices: 160 Oxmoor Blvd • Birmingham, AL 35209 • USA **Mailing Address:** P.O. Box 26221 • Birmingham, AL 35260 • USA

Tel: 205.945.1774 • U.S. and Canada: 800.722.2255 • **Fax:** 205.945.8768

Email: info@southernbiotech.com • **Website:** www.southernbiotech.com