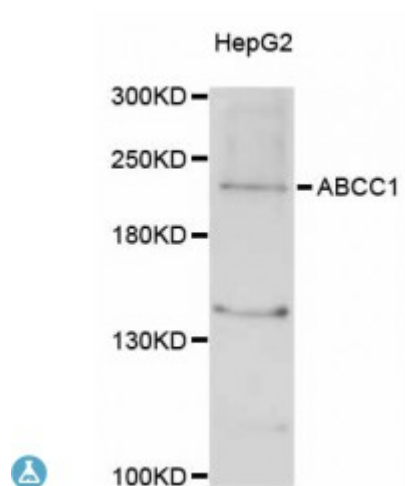


## Anti-ABCC1 Antibody



### Description

The protein encoded by this gene is a member of the superfamily of ATP-binding cassette (ABC) transporters. ABC proteins transport various molecules across extra-and intra-cellular membranes. ABC genes are divided into seven distinct subfamilies (ABC1, MDR/TAP, MRP, ALD, OABP, GCN20, White). This full transporter is a member of the MRP subfamily which is involved in multi-drug resistance. This protein functions as a multispecific organic anion transporter, with oxidized glutathione, cysteinyl leukotrienes, and activated aflatoxin B1 as substrates. This protein also transports glucuronides and sulfate conjugates of steroid hormones and bile salts. Alternatively spliced variants of this gene have been described but their full-length nature is unknown.

<b>Model</b>	STJ113716
<b>Host</b>	Rabbit
<b>Reactivity</b>	Human, Rat
<b>Applications</b>	IHC, WB
<b>Immunogen</b>	Recombinant fusion protein containing a sequence corresponding to amino acids 850-960 of human ABCC1 (NP_004987.2).
<b>Gene ID</b>	<a href="#">4363</a>
<b>Gene Symbol</b>	<a href="#">ABCC1</a>
<b>Dilution range</b>	WB 1:500 - 1:2000 IHC 1:50 - 1:200
<b>Tissue Specificity</b>	Lung, testis and peripheral blood mononuclear cells
<b>Purification</b>	Affinity purification

<b>Note</b>	For Research Use Only (RUO).
<b>Protein Name</b>	Multidrug resistance-associated protein 1 ATP-binding cassette sub-family C member 1 Leukotriene C(4 transporter LTC4 transporter
<b>Molecular Weight</b>	171.591 kDa
<b>Clonality</b>	Polyclonal
<b>Conjugation</b>	Unconjugated
<b>Isotype</b>	IgG
<b>Formulation</b>	PBS with 0.02% sodium azide, 50% glycerol, pH7.3.
<b>Storage Instruction</b>	Store at -20C. Avoid freeze / thaw cycles.
<b>Database Links</b>	<a href="#">HGNC:510MIM:158343Reactome:R-HSA-196741</a>
<b>Alternative Names</b>	Multidrug resistance-associated protein 1 ATP-binding cassette sub-family C member 1 Leukotriene C(4 transporter LTC4 transporter
<b>Function</b>	Mediates export of organic anions and drugs from the cytoplasm, Mediates ATP-dependent transport of glutathione and glutathione conjugates, leukotriene C4, estradiol-17-beta-o-glucuronide, methotrexate, antiviral drugs and other xenobiotics, Confers resistance to anticancer drugs, Hydrolyzes ATP with low efficiency,
<b>Cellular Localization</b>	Cell membrane

---

**St John's Laboratory Ltd**

**F** +44 (0)207 681 2580

**T** +44 (0)208 223 3081

**W** <http://www.stjohnslabs.com/>

**E** [info@stjohnslabs.com](mailto:info@stjohnslabs.com)