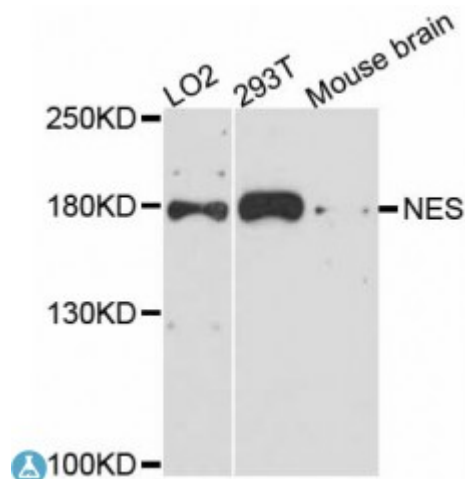


Anti-NES Antibody



Description

This gene encodes a member of the intermediate filament protein family and is expressed primarily in nerve cells.

Model	STJ113858
Host	Rabbit
Reactivity	Human, Mouse, Rat
Applications	IF, WB
Immunogen	Recombinant fusion protein containing a sequence corresponding to amino acids 1392-1621 of human NES (NP_006608.1).
Gene ID	10763
Gene Symbol	NES
Dilution range	WB 1:500 - 1:1000 IF 1:50 - 1:100
Tissue Specificity	CNS stem cells
Purification	Affinity purification
Note	For Research Use Only (RUO).
Protein Name	Nestin
Molecular Weight	177.439 kDa
Clonality	Polyclonal
Conjugation	Unconjugated
Isotype	IgG

Formulation	PBS with 0.02% sodium azide, 50% glycerol, pH7.3.
Storage Instruction	Store at -20C. Avoid freeze / thaw cycles.
Database Links	HGNC:7756OMIM:600915
Alternative Names	Nestin
Function	Required for brain and eye development, Promotes the disassembly of phosphorylated vimentin intermediate filaments (IF) during mitosis and may play a role in the trafficking and distribution of IF proteins and other cellular factors to daughter cells during progenitor cell division, Required for survival, renewal and mitogen-stimulated proliferation of neural progenitor cells ,
Post-translational Modifications	Constitutively phosphorylated, This increases during mitosis when the cytoplasmic intermediate filament network is reorganized ,

St John's Laboratory Ltd

F +44 (0)207 681 2580

T +44 (0)208 223 3081

W <http://www.stjohnslabs.com/>

E info@stjohnslabs.com