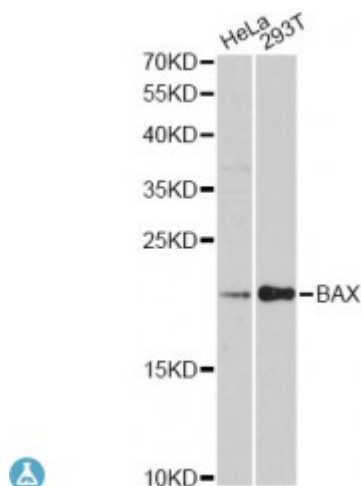


## Anti-BAX Antibody



### Description

The protein encoded by this gene belongs to the BCL2 protein family. BCL2 family members form hetero- or homodimers and act as anti- or pro-apoptotic regulators that are involved in a wide variety of cellular activities. This protein forms a heterodimer with BCL2, and functions as an apoptotic activator. This protein is reported to interact with, and increase the opening of, the mitochondrial voltage-dependent anion channel (VDAC), which leads to the loss in membrane potential and the release of cytochrome c. The expression of this gene is regulated by the tumor suppressor P53 and has been shown to be involved in P53-mediated apoptosis. Multiple alternatively spliced transcript variants, which encode different isoforms, have been reported for this gene.

<b>Model</b>	STJ113911
<b>Host</b>	Rabbit
<b>Reactivity</b>	Human, Mouse, Rat
<b>Applications</b>	IF, IHC, WB
<b>Immunogen</b>	A synthetic peptide corresponding to a sequence within amino acids 1-100 of human BAX (NP_620116.1).
<b>Gene ID</b>	<a href="#">581</a>
<b>Gene Symbol</b>	<a href="#">BAX</a>
<b>Dilution range</b>	WB 1:500 - 1:2000 IHC 1:100 - 1:200 IF 1:50 - 1:200
<b>Tissue Specificity</b>	Expressed in a wide variety of tissues, Isoform Psi is found in glial tumors, Isoform Alpha is expressed in spleen, breast, ovary, testis, colon and brain,

and at low levels in skin and lung, Isoform Sigma is expressed in spleen, breast, ovary, testis, lung, colon, brain and at low levels in skin, Isoform Alpha and isoform Sigma are expressed in pro-myelocytic leukemia, histiocytic lymphoma, Burkitt's lymphoma, T-cell lymphoma, lymphoblastic leukemia, breast adenocarcinoma, ovary adenocarcinoma, prostate c

<b>Purification</b>	Affinity purification
<b>Note</b>	For Research Use Only (RUO).
<b>Protein Name</b>	Apoptosis regulator BAX Bcl-2-like protein 4 Bcl2-L-4
<b>Molecular Weight</b>	21.184 kDa
<b>Clonality</b>	Polyclonal
<b>Conjugation</b>	Unconjugated
<b>Isotype</b>	IgG
<b>Formulation</b>	PBS with 0.02% sodium azide, 50% glycerol, pH7.3.
<b>Storage Instruction</b>	Store at -20C. Avoid freeze / thaw cycles.
<b>Database Links</b>	<a href="#">HGNC:959OMIM:600040Reactome:R-HSA-111457</a>
<b>Alternative Names</b>	Apoptosis regulator BAX Bcl-2-like protein 4 Bcl2-L-4
<b>Function</b>	Plays a role in the mitochondrial apoptotic process, Under normal conditions, BAX is largely cytosolic via constant retrotranslocation from mitochondria to the cytosol mediated by BCL2L1/Bcl-xL, which avoids accumulation of toxic BAX levels at the mitochondrial outer membrane (MOM) , Under stress conditions, undergoes a conformation change that causes translocation to the mitochondrion membrane, leading to the release of cytochrome c that then triggers apoptosis, Promotes activation of CASP3, and thereby apoptosis,
<b>Cellular Localization</b>	Isoform Alpha: Mitochondrion membrane