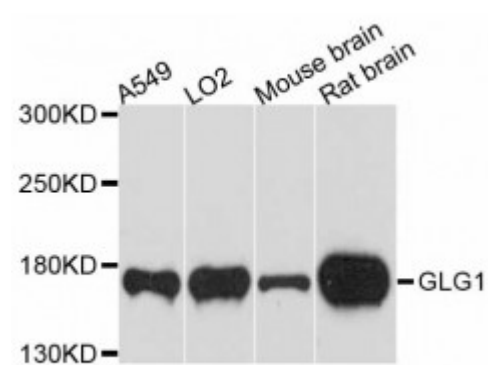


Anti-GLG1 Antibody



Model	STJ113925
Host	Rabbit
Reactivity	Human, Mouse, Rat
Applications	WB
Immunogen	Recombinant fusion protein containing a sequence corresponding to amino acids 974-1203 of human GLG1 (NP_036333.2).
Gene ID	2734
Gene Symbol	GLG1
Dilution range	WB 1:500 - 1:1000
Tissue Specificity	Widely expressed, Highest levels in pancreas, skeletal muscle, placenta, heart, testis and ovary, Also found in the kidney, liver, lung and brain
Purification	Affinity purification
Note	For Research Use Only (RUO).
Protein Name	Golgi apparatus protein 1 CFR-1 Cysteine-rich fibroblast growth factor receptor E-selectin ligand 1 ESL-1 Golgi sialoglycoprotein MG-160
Molecular Weight	134.552 kDa
Clonality	Polyclonal
Conjugation	Unconjugated
Isotype	IgG
Formulation	PBS with 0.02% sodium azide, 50% glycerol, pH7.3.
Storage Instruction	Store at -20C. Avoid freeze / thaw cycles.

Database Links	HGNC:4316 OMIM:600753 Reactome:R-HSA-202733
Alternative Names	Golgi apparatus protein 1 CFR-1 Cysteine-rich fibroblast growth factor receptor E-selectin ligand 1 ESL-1 Golgi sialoglycoprotein MG-160
Function	Binds fibroblast growth factor and E-selectin (cell-adhesion lectin on endothelial cells mediating the binding of neutrophils)
Cellular Localization	Golgi apparatus membrane
Post-translational Modifications	Fucosylation is essential for binding to E-selectin,

St John's Laboratory Ltd

F +44 (0)207 681 2580

T +44 (0)208 223 3081

W <http://www.stjohnslabs.com/>

E info@stjohnslabs.com