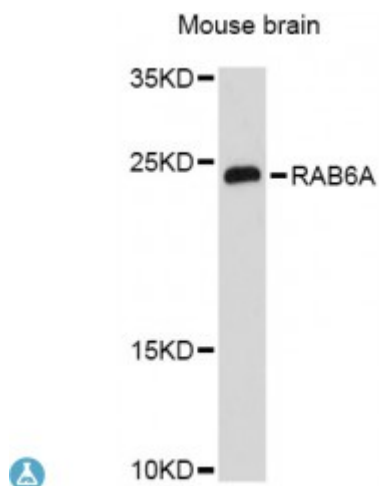


Anti-RAB6A Antibody



Description

This gene encodes a member of the RAB family, which belongs to the small GTPase superfamily. GTPases of the RAB family bind to various effectors to regulate the targeting and fusion of transport carriers to acceptor compartments. This protein is located at the Golgi apparatus, which regulates trafficking in both a retrograde (from early endosomes and Golgi to the endoplasmic reticulum) and an anterograde (from the Golgi to the plasma membrane) directions. Myosin II is an effector of this protein in these processes. This protein is also involved in assembly of human cytomegalovirus (HCMV) by interacting with the cellular protein Bicaudal D1, which interacts with the HCMV virion tegument protein, pp150. Multiple alternatively spliced transcript variants encoding different isoforms have been identified.

Model	STJ113986
Host	Rabbit
Reactivity	Mouse
Applications	WB
Immunogen	Recombinant fusion protein containing a sequence corresponding to amino acids 1-200 of human RAB6A (NP_002860.2).
Gene ID	5870
Gene Symbol	RAB6A
Dilution range	WB 1:500 - 1:2000
Tissue Specificity	Ubiquitous
Purification	Affinity purification

Note	For Research Use Only (RUO).
Protein Name	Ras-related protein Rab-6A Rab-6
Molecular Weight	23.593 kDa
Clonality	Polyclonal
Conjugation	Unconjugated
Isotype	IgG
Formulation	PBS with 0.02% sodium azide, 50% glycerol, pH7.3.
Storage Instruction	Store at -20C. Avoid freeze / thaw cycles.
Database Links	HGNC:9786 OMIM:179513 Reactome:R-HSA-1912420
Alternative Names	Ras-related protein Rab-6A Rab-6
Function	Protein transport, Regulator of membrane traffic from the Golgi apparatus towards the endoplasmic reticulum (ER), Has a low GTPase activity, Involved in COPI-independent retrograde transport from the Golgi to the ER ,
Cellular Localization	Golgi apparatus membrane
Post-translational Modifications	Prenylated,

St John's Laboratory Ltd

F +44 (0)207 681 2580

T +44 (0)208 223 3081

W <http://www.stjohnslabs.com/>

E info@stjohnslabs.com