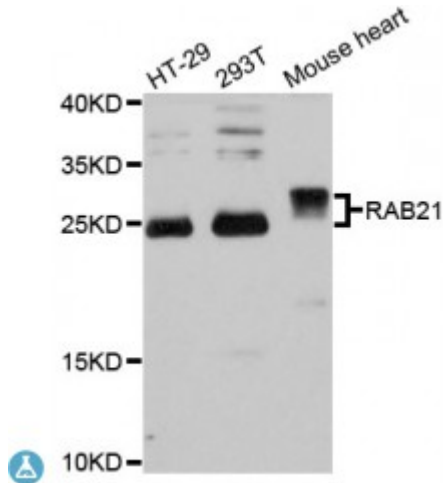


Anti-RAB21 Antibody



Description

This gene belongs to the Rab family of monomeric GTPases, which are involved in the control of cellular membrane traffic. The encoded protein plays a role in the targeted trafficking of integrins via its association with integrin alpha tails. As a consequence, the encoded protein is involved in the regulation of cell adhesion and migration. Expression of this gene is associated with a poor prognosis for glioma patients. This gene is downregulated by the tumor suppressor miR-200b, and miRNA-200b is itself downregulated in glioma tissues.

Model	STJ113990
Host	Rabbit
Reactivity	Human, Mouse, Rat
Applications	WB
Immunogen	Recombinant fusion protein containing a sequence corresponding to amino acids 1-225 of human RAB21 (NP_055814.1).
Gene ID	23011
Gene Symbol	RAB21
Dilution range	WB 1:500 - 1:2000
Tissue Specificity	Widely expressed, In jejunal tissue, predominantly expressed in the apical region of the epithelial cell layer of the villi, weak expression, if any, in the crypt epithelium, Capillary endothelium and some cell types in the lamina propria also show expression
Purification	Affinity purification
Note	For Research Use Only (RUO).

Protein Name	Ras-related protein Rab-21
Molecular Weight	24.348 kDa
Clonality	Polyclonal
Conjugation	Unconjugated
Isotype	IgG
Formulation	PBS with 0.02% sodium azide, 50% glycerol, pH7.3.
Storage Instruction	Store at -20C. Avoid freeze / thaw cycles.
Database Links	HGNC:18263OMIM:612398Reactome:R-HSA-8873719
Alternative Names	Ras-related protein Rab-21
Function	Regulates integrin internalization and recycling, but does not influence the traffic of endosomally translocated receptors in general, As a result, may regulate cell adhesion and migration , During the mitosis of adherent cells, controls the endosomal trafficking of integrins which is required for the successful completion of cytokinesis, Involved in neurite growth ,
Cellular Localization	Endoplasmic reticulum membrane, in polarized cells, observed in vesicles in the apical cytoplasm ,

St John's Laboratory Ltd

F +44 (0)207 681 2580

T +44 (0)208 223 3081

W <http://www.stjohnslabs.com/>

E info@stjohnslabs.com