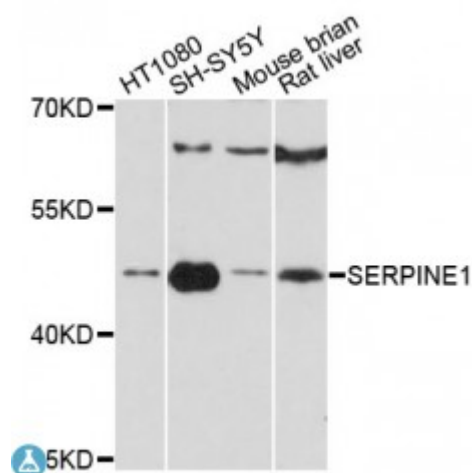


Anti-SERPINE1 Antibody



Description

This gene encodes a member of the serine proteinase inhibitor (serpin) superfamily. This member is the principal inhibitor of tissue plasminogen activator (tPA) and urokinase (uPA), and hence is an inhibitor of fibrinolysis. Defects in this gene are the cause of plasminogen activator inhibitor-1 deficiency (PAI-1 deficiency), and high concentrations of the gene product are associated with thrombophilia. Alternatively spliced transcript variants encoding different isoforms have been found for this gene.

Model	STJ113996
Host	Rabbit
Reactivity	Human, Mouse, Rat
Applications	WB
Immunogen	Recombinant fusion protein containing a sequence corresponding to amino acids 24-158 of human SERPINE1 (NP_000593.1).
Gene ID	5054
Gene Symbol	SERPINE1
Dilution range	WB 1:500 - 1:2000
Tissue Specificity	Expressed in endothelial cells , Found in plasma, platelets, and hepatoma and fibrosarcoma cells
Purification	Affinity purification
Note	For Research Use Only (RUO).
Protein Name	Plasminogen activator inhibitor 1 PAI PAI-1 Endothelial plasminogen

	activator inhibitor Serpin E1
Molecular Weight	45.06 kDa
Clonality	Polyclonal
Conjugation	Unconjugated
Isotype	IgG
Formulation	PBS with 0.02% sodium azide, 50% glycerol, pH7.3.
Storage Instruction	Store at -20C. Avoid freeze / thaw cycles.
Database Links	HGNC:8583OMIM:173360Reactome:R-HSA-114608
Alternative Names	Plasminogen activator inhibitor 1 PAI PAI-1 Endothelial plasminogen activator inhibitor Serpin E1
Function	Serine protease inhibitor, Inhibits TMPRSS7 ,
Cellular Localization	Secreted
Post-translational Modifications	Inactivated by proteolytic attack of the urokinase-type (u-PA) and the tissue-type (TPA), cleaving the 369-Arg- -Met-370 bond

St John's Laboratory Ltd

F +44 (0)207 681 2580

T +44 (0)208 223 3081

W <http://www.stjohnslabs.com/>

E info@stjohnslabs.com