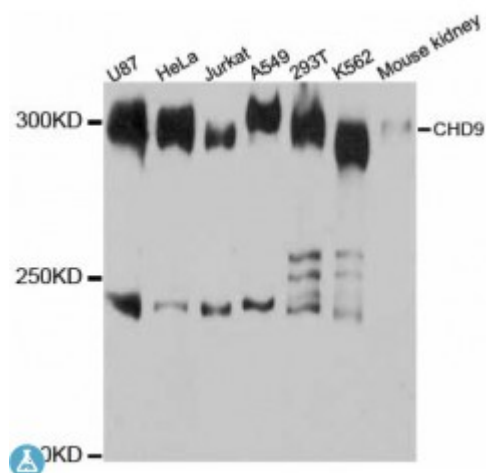


Anti-CHD9 Antibody



Model	STJ114040
Host	Rabbit
Reactivity	Human, Mouse
Applications	WB
Immunogen	Recombinant fusion protein containing a sequence corresponding to amino acids 85-190 of human CHD9 (NP_079410.4).
Gene ID	80205
Gene Symbol	CHD9
Dilution range	WB 1:500 - 1:2000
Tissue Specificity	Widely expressed at low levels, In bone marrow, expression is restricted to osteoprogenitor cells adjacent to mature osteoblasts
Purification	Affinity purification
Note	For Research Use Only (RUO).
Protein Name	Chromodomain-helicase-DNA-binding protein 9 CHD-9
Molecular Weight	326.022 kDa
Clonality	Polyclonal
Conjugation	Unconjugated
Isotype	IgG
Formulation	PBS with 0.02% sodium azide, 50% glycerol, pH7.3.
Storage Instruction	Store at -20C. Avoid freeze / thaw cycles.
Database Links	HGNC:25701 Reactome:R-HSA-1368082

Alternative Names	Chromodomain-helicase-DNA-binding protein 9 CHD-9
Function	Acts as a transcriptional coactivator for PPARA and possibly other nuclear receptors, Proposed to be a ATP-dependent chromatin remodeling protein, Has DNA-dependent ATPase activity and binds to A/T-rich DNA, Associates with A/T-rich regulatory regions in promoters of genes that participate in the differentiation of progenitors during osteogenesis ,
Cellular Localization	Cytoplasm
Post-translational Modifications	Phosphorylated on serine and tyrosine residues,

St John's Laboratory Ltd

F +44 (0)207 681 2580

T +44 (0)208 223 3081

W <http://www.stjohnslabs.com/>

E info@stjohnslabs.com