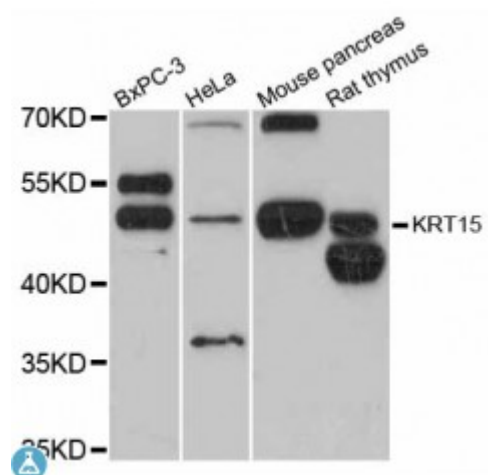


Anti-KRT15 Antibody



Description

The protein encoded by this gene is a member of the keratin gene family. The keratins are intermediate filament proteins responsible for the structural integrity of epithelial cells and are subdivided into cytokeratins and hair keratins. Most of the type I cytokeratins consist of acidic proteins which are arranged in pairs of heterotypic keratin chains and are clustered in a region on chromosome 17q21.2.

Model	STJ114048
Host	Rabbit
Reactivity	Human, Mouse, Rat
Applications	WB
Immunogen	Recombinant fusion protein containing a sequence corresponding to amino acids 360-450 of human KRT15 (NP_002266.2).
Gene ID	3866
Gene Symbol	KRT15
Dilution range	WB 1:500 - 1:2000
Tissue Specificity	Expressed in a discontinuous manner in the basal cell layer of adult skin epidermis, but continuously in the basal layer of fetal skin epidermis and nail, Also expressed in the outer root sheath above the hair bulb in hair follicle (at protein level), Expressed homogeneously in all cell layers of the esophagus and exocervix, but detected in the basal cell layer only of oral mucosa, skin and in the basal plus the next two layers of the suprabasal epithelium of the palate
Purification	Affinity purification

Note	For Research Use Only (RUO).
Protein Name	Keratin type I cytoskeletal 15 Cytokeratin-15 CK-15 Keratin-15 K15
Molecular Weight	49.212 kDa
Clonality	Polyclonal
Conjugation	Unconjugated
Isotype	IgG
Formulation	PBS with 0.02% sodium azide, 50% glycerol, pH7.3.
Storage Instruction	Store at -20C. Avoid freeze / thaw cycles.
Database Links	HGNC:6421 OMIM:148030 Reactome:R-HSA-6805567
Alternative Names	Keratin type I cytoskeletal 15 Cytokeratin-15 CK-15 Keratin-15 K15

St John's Laboratory Ltd

F +44 (0)207 681 2580

T +44 (0)208 223 3081

W <http://www.stjohnslabs.com/>

E info@stjohnslabs.com