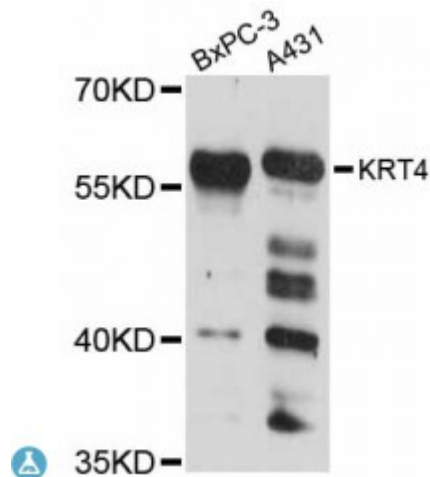


Anti-KRT4 Antibody



Description

The protein encoded by this gene is a member of the keratin gene family. The type II cytokeratins consist of basic or neutral proteins which are arranged in pairs of heterotypic keratin chains coexpressed during differentiation of simple and stratified epithelial tissues. This type II cytokeratin is specifically expressed in differentiated layers of the mucosal and esophageal epithelia with family member KRT13. Mutations in these genes have been associated with White Sponge Nevus, characterized by oral, esophageal, and anal leukoplakia. The type II cytokeratins are clustered in a region of chromosome 12q12-q13.

Model	STJ114049
Host	Rabbit
Reactivity	Human
Applications	WB
Immunogen	Recombinant fusion protein containing a sequence corresponding to amino acids 446-520 of human KRT4 (NP_002263.3).
Gene Symbol	KRT4
Dilution range	WB 1:500 - 1:2000
Tissue Specificity	Detected in the suprabasal layer of the stratified epithelium of the esophagus, exocervix, vagina, mouth and lingual mucosa, and in cells and cell clusters in the mucosa and serous gland ducts of the esophageal submucosa (at protein level), Expressed widely in the exocervix and esophageal epithelium, with lowest levels detected in the basal cell layer
Purification	Affinity purification

Note	For Research Use Only (RUO).
Protein Name	Keratin type II cytoskeletal 4 Cytokeratin-4 CK-4 Keratin-4 K4 Type-II keratin Kb4
Molecular Weight	57.285 kDa
Clonality	Polyclonal
Conjugation	Unconjugated
Isotype	IgG
Formulation	PBS with 0.02% sodium azide, 50% glycerol, pH7.3.
Storage Instruction	Store at -20C. Avoid freeze / thaw cycles.
Database Links	HGNC:6441 OMIM:123940 Reactome:R-HSA-6805567
Alternative Names	Keratin type II cytoskeletal 4 Cytokeratin-4 CK-4 Keratin-4 K4 Type-II keratin Kb4

St John's Laboratory Ltd

F +44 (0)207 681 2580

T +44 (0)208 223 3081

W <http://www.stjohnslabs.com/>

E info@stjohnslabs.com