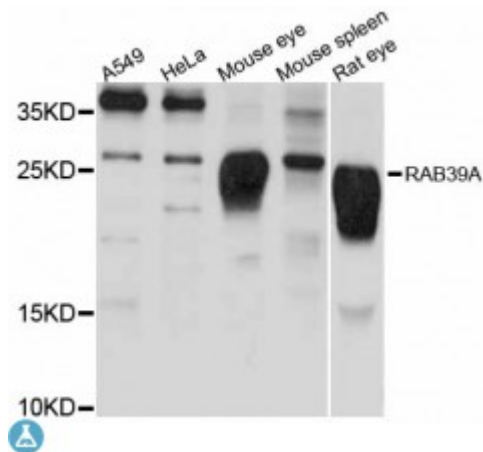


Anti-RAB39A Antibody



Model	STJ114116
Host	Rabbit
Reactivity	Human, Mouse, Rat
Applications	WB
Immunogen	Recombinant fusion protein containing a sequence corresponding to amino acids 100-170 of human RAB39A (NP_059986.1).
Gene ID	54734
Gene Symbol	RAB39A
Dilution range	WB 1:500 - 1:2000
Purification	Affinity purification
Note	For Research Use Only (RUO).
Protein Name	Ras-related protein Rab-39A Rab-39
Molecular Weight	25.007 kDa
Clonality	Polyclonal
Conjugation	Unconjugated
Isotype	IgG
Formulation	PBS with 0.02% sodium azide, 50% glycerol, pH7.3.
Storage Instruction	Store at -20C. Avoid freeze / thaw cycles.
Database Links	HGNC:16521 Reactome:R-HSA-6811438
Alternative Names	Ras-related protein Rab-39A Rab-39

Function

Plays a role in the maturation and acidification of phagosomes that engulf pathogens, such as S,aureus and M,tuberculosis, Plays a role in vesicular trafficking, Plays a role in the fusion of phagosomes with lysosomes, Negatively regulates LPS-induced autophagosome formation in macrophages possibly by implicating PI3K ,

Cellular Localization

Cell membrane,

St John's Laboratory Ltd**F** +44 (0)207 681 2580**T** +44 (0)208 223 3081**W** <http://www.stjohnslabs.com/>**E** info@stjohnslabs.com