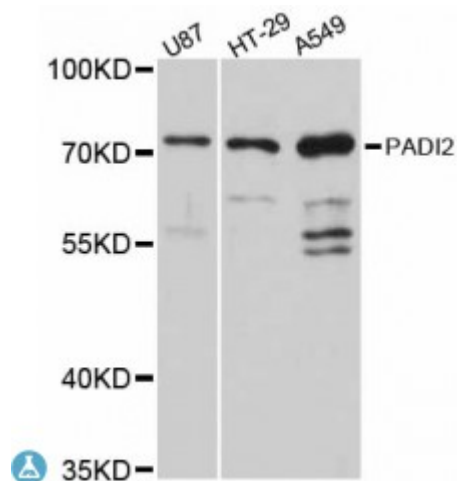


Anti-PADI2 Antibody



Description

This gene encodes a member of the peptidyl arginine deiminase family of enzymes, which catalyze the post-translational deimination of proteins by converting arginine residues into citrullines in the presence of calcium ions. The family members have distinct substrate specificities and tissue-specific expression patterns. The type II enzyme is the most widely expressed family member. Known substrates for this enzyme include myelin basic protein in the central nervous system and vimentin in skeletal muscle and macrophages. This enzyme is thought to play a role in the onset and progression of neurodegenerative human disorders, including Alzheimer disease and multiple sclerosis, and it has also been implicated in glaucoma pathogenesis. This gene exists in a cluster with four other paralogous genes.

Model	STJ114127
Host	Rabbit
Reactivity	Human
Applications	WB
Immunogen	Recombinant fusion protein containing a sequence corresponding to amino acids 1-200 of human PADI2 (NP_031391.2).
Gene ID	11240
Gene Symbol	PADI2
Dilution range	WB 1:500 - 1:2000
Purification	Affinity purification
Note	For Research Use Only (RUO).

Protein Name	Protein-arginine deiminase type-2
Molecular Weight	75.564 kDa
Clonality	Polyclonal
Conjugation	Unconjugated
Isotype	IgG
Formulation	PBS with 0.02% sodium azide, 50% glycerol, pH7.3.
Storage Instruction	Store at -20C. Avoid freeze / thaw cycles.
Database Links	HGNC:18341 OMIM:607935 Reactome:R-HSA-3247509
Alternative Names	Protein-arginine deiminase type-2
Function	Catalyzes the deimination of arginine residues of proteins,
Cellular Localization	Cytoplasm

St John's Laboratory Ltd

F +44 (0)207 681 2580

T +44 (0)208 223 3081

W <http://www.stjohnslabs.com/>

E info@stjohnslabs.com