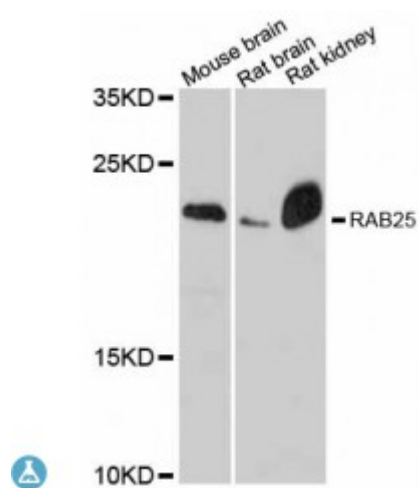


Anti-RAB25 Antibody



Description

The protein encoded by this gene is a member of the RAS superfamily of small GTPases. The encoded protein is involved in membrane trafficking and cell survival. This gene has been found to be a tumor suppressor and an oncogene, depending on the context. Two variants, one protein-coding and the other not, have been found for this gene.

Model	STJ114164
Host	Rabbit
Reactivity	Mouse, Rat
Applications	WB
Immunogen	Recombinant fusion protein containing a sequence corresponding to amino acids 1-213 of human RAB25 (NP_065120.2).
Gene ID	57111
Gene Symbol	RAB25
Dilution range	WB 1:500 - 1:2000
Tissue Specificity	Expressed in ovarian epithelium (NOE) and breast tissue, Expressed in ovarian cancer
Purification	Affinity purification
Note	For Research Use Only (RUO).
Protein Name	Ras-related protein Rab-25 CATX-8
Molecular Weight	23.496 kDa
Clonality	Polyclonal

Conjugation	Unconjugated
Isotype	IgG
Formulation	PBS with 0.02% sodium azide, 50% glycerol, pH7.3.
Storage Instruction	Store at -20C. Avoid freeze / thaw cycles.
Database Links	HGNC:18238 OMIM:612942 Reactome:R-HSA-8873719
Alternative Names	Ras-related protein Rab-25 CATX-8
Function	Involved in the regulation of cell survival, Promotes invasive migration of cells in which it functions to localize and maintain integrin alpha-V/beta-1 at the tips of extending pseudopodia ,
Cellular Localization	Cell membrane

St John's Laboratory Ltd

F +44 (0)207 681 2580

T +44 (0)208 223 3081

W <http://www.stjohnslabs.com/>

E info@stjohnslabs.com