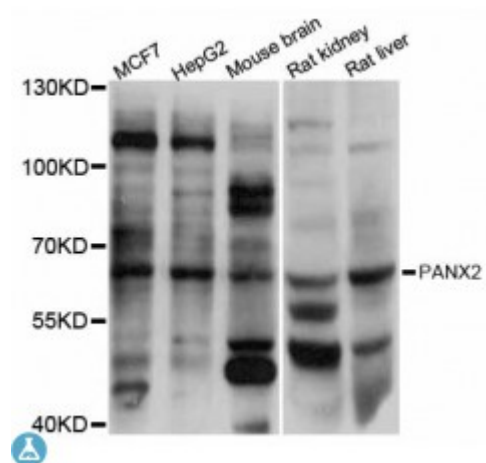


Anti-PANX2 Antibody



Description

The protein encoded by this gene belongs to the innexin family. Innexin family members are the structural components of gap junctions. This protein and pannexin 1 are abundantly expressed in central nervous system (CNS) and are coexpressed in various neuronal populations. Studies in *Xenopus* oocytes suggest that this protein alone and in combination with pannexin 1 may form cell type-specific gap junctions with distinct properties. Multiple transcript variants encoding different isoforms have been found for this gene.

| | |
|-------------------------|---|
| Model | STJ114170 |
| Host | Rabbit |
| Reactivity | Human, Mouse, Rat |
| Applications | WB |
| Immunogen | Recombinant fusion protein containing a sequence corresponding to amino acids 320-480 of human PANX2 (NP_443071.2). |
| Gene ID | 56666 |
| Gene Symbol | PANX2 |
| Dilution range | WB 1:500 - 1:2000 |
| Purification | Affinity purification |
| Note | For Research Use Only (RUO). |
| Protein Name | Pannexin-2 |
| Molecular Weight | 74.447 kDa |

| | |
|------------------------------|---|
| Clonality | Polyclonal |
| Conjugation | Unconjugated |
| Isotype | IgG |
| Formulation | PBS with 0.02% sodium azide, 50% glycerol, pH7.3. |
| Storage Instruction | Store at -20C. Avoid freeze / thaw cycles. |
| Database Links | HGNC:8600 OMIM:608421 Reactome:R-HSA-112303 |
| Alternative Names | Pannexin-2 |
| Function | Structural component of the gap junctions and the hemichannels, |
| Cellular Localization | Cell membrane, Cell junction, gap junction |

St John's Laboratory Ltd

F +44 (0)207 681 2580

T +44 (0)208 223 3081

W <http://www.stjohnslabs.com/>

E info@stjohnslabs.com