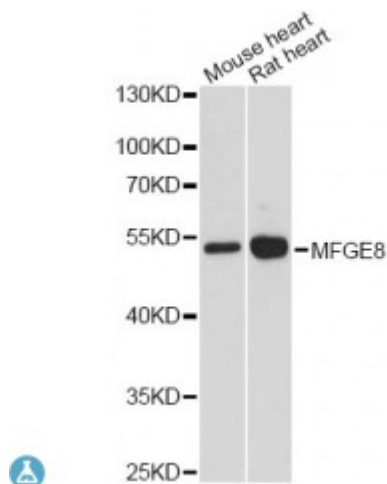


Anti-MFGE8 Antibody



Description

This gene encodes a preproprotein that is proteolytically processed to form multiple protein products. The major encoded protein product, lactadherin, is a membrane glycoprotein that promotes phagocytosis of apoptotic cells. This protein has also been implicated in wound healing, autoimmune disease, and cancer. Lactadherin can be further processed to form a smaller cleavage product, medin, which comprises the major protein component of aortic medial amyloid (AMA). Alternative splicing results in multiple transcript variants.

Model	STJ114205
Host	Rabbit
Reactivity	Human, Mouse, Rat
Applications	WB
Immunogen	Recombinant fusion protein containing a sequence corresponding to amino acids 1-200 of human MFGE8 (NP_001108086.1).
Gene ID	4240
Gene Symbol	MFGE8
Dilution range	WB 1:500 - 1:2000
Tissue Specificity	Mammary epithelial cell surfaces and aortic media, Overexpressed in several carcinomas
Purification	Affinity purification
Note	For Research Use Only (RUO).
Protein Name	Lactadherin Breast epithelial antigen BA46 HMFG MFGM Milk fat globule-

	EGF factor 8 MFG-E8 SED1
Molecular Weight	43.123 kDa
Clonality	Polyclonal
Conjugation	Unconjugated
Isotype	IgG
Formulation	PBS with 0.02% sodium azide, 50% glycerol, pH7.3.
Storage Instruction	Store at -20C. Avoid freeze / thaw cycles.
Database Links	HGNC:7036 OMIM:602281 Reactome:R-HSA-381426
Alternative Names	Lactadherin Breast epithelial antigen BA46 HMFG MFGM Milk fat globule-EGF factor 8 MFG-E8 SED1
Function	Plays an important role in the maintenance of intestinal epithelial homeostasis and the promotion of mucosal healing, Promotes VEGF-dependent neovascularization , Contributes to phagocytic removal of apoptotic cells in many tissues, Specific ligand for the alpha-v/beta-3 and alpha-v/beta-5 receptors, Also binds to phosphatidylserine-enriched cell surfaces in a receptor-independent manner, Zona pellucida-binding protein which may play a role in gamete interaction, Binds specifically to rotavirus and inhibits its replication,
Cellular Localization	Membrane
Post-translational Modifications	Medin has a ragged N-terminus with minor species starting at Pro-264 and Gly-273

St John's Laboratory Ltd

F +44 (0)207 681 2580

T +44 (0)208 223 3081

W <http://www.stjohnslabs.com/>

E info@stjohnslabs.com