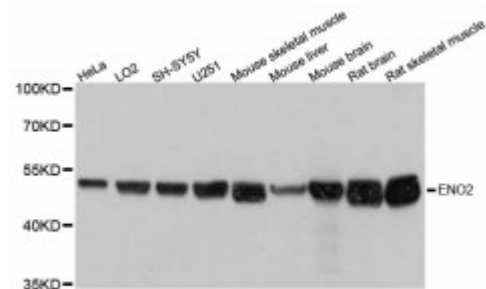


Anti-ENO2 Antibody



Description

This gene encodes one of the three enolase isoenzymes found in mammals. This isoenzyme, a homodimer, is found in mature neurons and cells of neuronal origin. A switch from alpha enolase to gamma enolase occurs in neural tissue during development in rats and primates.

Model	STJ114221
Host	Rabbit
Reactivity	Human, Mouse, Rat
Applications	WB
Immunogen	Recombinant fusion protein containing a sequence corresponding to amino acids 195-434 of human ENO2 (NP_001966.1).
Gene ID	2026
Gene Symbol	ENO2
Dilution range	WB 1:500 - 1:2000
Tissue Specificity	The alpha/alpha homodimer is expressed in embryo and in most adult tissues, The alpha/beta heterodimer and the beta/beta homodimer are found in striated muscle, and the alpha/gamma heterodimer and the gamma/gamma homodimer in neurons
Purification	Affinity purification
Note	For Research Use Only (RUO).
Protein Name	Gamma-enolase
Molecular Weight	47.269 kDa

Clonality	Polyclonal
Conjugation	Unconjugated
Isotype	IgG
Formulation	PBS with 0.02% sodium azide, 50% glycerol, pH7.3.
Storage Instruction	Store at -20C. Avoid freeze / thaw cycles.
Database Links	HGNC:3353OMIM:131360Reactome:R-HSA-70171
Alternative Names	Gamma-enolase
Function	Has neurotrophic and neuroprotective properties on a broad spectrum of central nervous system (CNS) neurons, Binds, in a calcium-dependent manner, to cultured neocortical neurons and promotes cell survival ,
Cellular Localization	Cytoplasm,

St John's Laboratory Ltd

F +44 (0)207 681 2580

T +44 (0)208 223 3081

W <http://www.stjohnslabs.com/>

E info@stjohnslabs.com