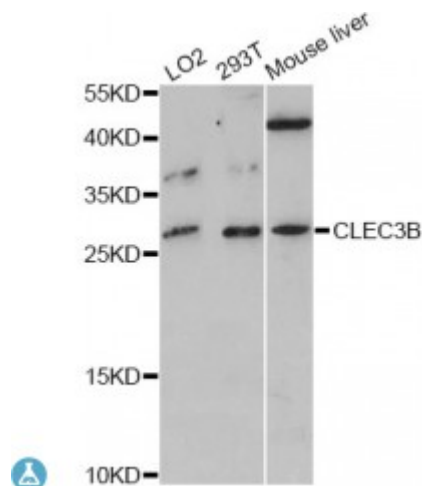


Anti-CLEC3B Antibody



Model	STJ114236
Host	Rabbit
Reactivity	Human, Mouse, Rat
Applications	WB
Immunogen	Recombinant fusion protein containing a sequence corresponding to amino acids 81-202 of human CLEC3B (NP_003269.2).
Gene ID	7123
Gene Symbol	CLEC3B
Dilution range	WB 1:500 - 1:2000
Tissue Specificity	Found in plasma
Purification	Affinity purification
Note	For Research Use Only (RUO).
Protein Name	Tetranectin TN C-type lectin domain family 3 member B Plasminogen kringle 4-binding protein
Molecular Weight	22.537 kDa
Clonality	Polyclonal
Conjugation	Unconjugated
Isotype	IgG
Formulation	PBS with 0.02% sodium azide, 50% glycerol, pH7.3.
Storage Instruction	Store at -20C. Avoid freeze / thaw cycles.
Database Links	HGNC:11891 OMIM:187520 Reactome:R-HSA-114608

Alternative Names	Tetranectin TN C-type lectin domain family 3 member B Plasminogen kringle 4-binding protein
Function	Tetranectin binds to plasminogen and to isolated kringle 4, May be involved in the packaging of molecules destined for exocytosis
Cellular Localization	Secreted

St John's Laboratory Ltd

F +44 (0)207 681 2580

T +44 (0)208 223 3081

W <http://www.stjohnslabs.com/>

E info@stjohnslabs.com