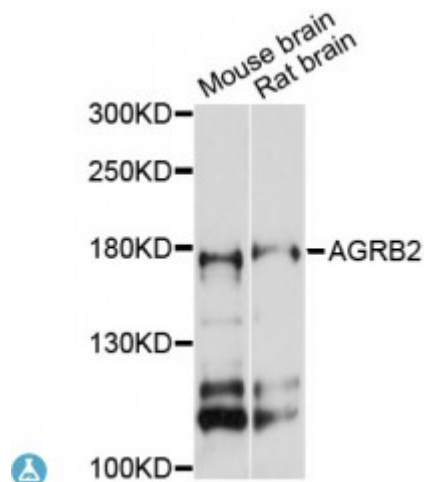


Anti-AGRB2 Antibody



Description

This gene encodes a seven-span transmembrane protein that is thought to be a member of the secretin receptor family. The encoded protein is a brain-specific inhibitor of angiogenesis. The mature peptide may be further cleaved into additional products (PMID:20367554). Alternative splicing results in multiple transcript variants.

Model	STJ114258
Host	Rabbit
Reactivity	Mouse, Rat
Applications	WB
Immunogen	A synthetic peptide corresponding to a sequence within amino acids 700-800 of human AGRB2 (NP_001281264.1).
Gene ID	576
Gene Symbol	ADGRB2
Dilution range	WB 1:500 - 1:2000
Tissue Specificity	Strongly expressed in brain, Also detected in heart, thymus, skeletal muscle, and different cell lines
Purification	Affinity purification
Note	For Research Use Only (RUO).
Protein Name	Adhesion G protein-coupled receptor B2 Brain-specific angiogenesis inhibitor 2
Molecular Weight	172.656 kDa

Clonality	Polyclonal
Conjugation	Unconjugated
Isotype	IgG
Formulation	PBS with 0.02% sodium azide, 50% glycerol, pH7.3.
Storage Instruction	Store at -20C. Avoid freeze / thaw cycles.
Database Links	HGNC:944OMIM:602683
Alternative Names	Adhesion G protein-coupled receptor B2 Brain-specific angiogenesis inhibitor 2
Function	Orphan G-protein coupled receptor involved in cell adhesion and probably in cell-cell interactions, Activates NFAT-signaling pathway, a transcription factor, via the G-protein GNAZ ,
Cellular Localization	Cell membrane
Post-translational Modifications	Autoproteolytic processes at the GPS domain

St John's Laboratory Ltd

F +44 (0)207 681 2580
T +44 (0)208 223 3081

W <http://www.stjohnslabs.com/>
E info@stjohnslabs.com