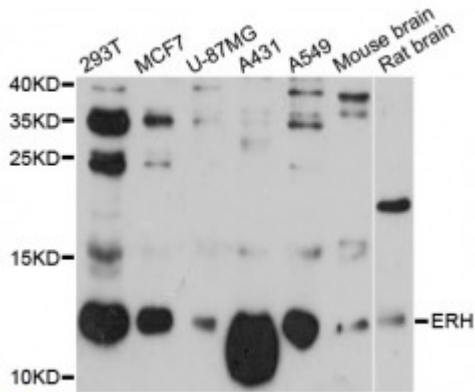


## Anti-ERH Antibody



<b>Model</b>	STJ114259
<b>Host</b>	Rabbit
<b>Reactivity</b>	Human, Mouse, Rat
<b>Applications</b>	WB
<b>Immunogen</b>	Recombinant fusion protein containing a sequence corresponding to amino acids 1-104 of human ERH (NP_004441.1).
<b>Gene ID</b>	<a href="#">2079</a>
<b>Gene Symbol</b>	<a href="#">ERH</a>
<b>Dilution range</b>	WB 1:500 - 1:2000
<b>Tissue Specificity</b>	Expressed in all tissues examined
<b>Purification</b>	Affinity purification
<b>Note</b>	For Research Use Only (RUO).
<b>Protein Name</b>	Enhancer of rudimentary homolog
<b>Molecular Weight</b>	12.259 kDa
<b>Clonality</b>	Polyclonal
<b>Conjugation</b>	Unconjugated
<b>Isotype</b>	IgG
<b>Formulation</b>	PBS with 0.02% sodium azide, 50% glycerol, pH7.3.
<b>Storage Instruction</b>	Store at -20C. Avoid freeze / thaw cycles.
<b>Database Links</b>	<a href="#">HGNC:3447OMIM:601191</a>

**Alternative Names**

Enhancer of rudimentary homolog

**Function**

May have a role in the cell cycle

---

**St John's Laboratory Ltd**

**F** +44 (0)207 681 2580

**T** +44 (0)208 223 3081

**W** <http://www.stjohnslabs.com/>

**E** [info@stjohnslabs.com](mailto:info@stjohnslabs.com)