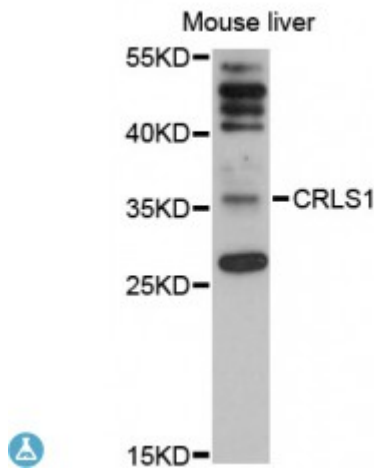


## Anti-CRLS1 Antibody



### Description

This gene encodes a member of the CDP-alcohol phosphatidyltransferase class-I family of proteins. The encoded enzyme catalyzes the synthesis of cardiolipin, a phospholipid component of mitochondrial membranes that is critical for mitochondrial function.

<b>Model</b>	STJ114266
<b>Host</b>	Rabbit
<b>Reactivity</b>	Mouse
<b>Applications</b>	WB
<b>Immunogen</b>	Recombinant fusion protein containing a sequence corresponding to amino acids 1-110 of human CRLS1 (NP_061968.1).
<b>Gene ID</b>	<a href="#">54675</a>
<b>Gene Symbol</b>	<a href="#">CRLS1</a>
<b>Dilution range</b>	WB 1:200 - 1:500
<b>Tissue Specificity</b>	Highly expressed in tissues such as heart, skeletal muscle and liver
<b>Purification</b>	Affinity purification
<b>Note</b>	For Research Use Only (RUO).
<b>Protein Name</b>	Cardiolipin synthase CMP-forming CLS
<b>Molecular Weight</b>	32.593 kDa
<b>Clonality</b>	Polyclonal
<b>Conjugation</b>	Unconjugated

<b>Isotype</b>	IgG
<b>Formulation</b>	PBS with 0.02% sodium azide, 50% glycerol, pH7.3.
<b>Storage Instruction</b>	Store at -20C. Avoid freeze / thaw cycles.
<b>Database Links</b>	<a href="#">HGNC:16148OMIM:608188Reactome:R-HSA-1482925</a>
<b>Alternative Names</b>	Cardiolipin synthase CMP-forming CLS
<b>Function</b>	Catalyzes the synthesis of cardiolipin (CL) (diphosphatidylglycerol) by specifically transferring a phosphatidyl group from CDP-diacylglycerol to phosphatidylglycerol (PG), CL is a key phospholipid in mitochondrial membranes and plays important roles in maintaining the functional integrity and dynamics of mitochondria under both optimal and stress conditions,
<b>Cellular Localization</b>	Mitochondrion inner membrane

---

**St John's Laboratory Ltd**

**F** +44 (0)207 681 2580

**T** +44 (0)208 223 3081

**W** <http://www.stjohnslabs.com/>

**E** [info@stjohnslabs.com](mailto:info@stjohnslabs.com)