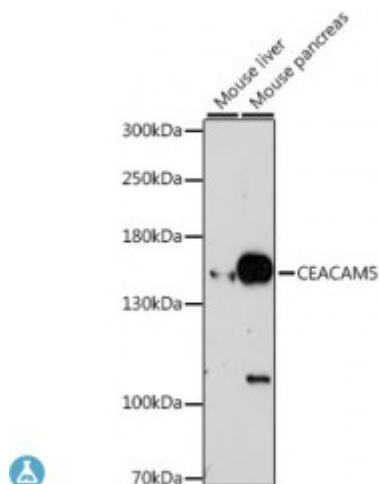


Anti-CEACAM5 Antibody



Description

This gene encodes a cell surface glycoprotein that represents the founding member of the carcinoembryonic antigen (CEA) family of proteins. The encoded protein is used as a clinical biomarker for gastrointestinal cancers and may promote tumor development through its role as a cell adhesion molecule. Additionally, the encoded protein may regulate differentiation, apoptosis, and cell polarity. This gene is present in a CEA family gene cluster on chromosome 19. Alternative splicing results in multiple transcript variants.

Model	STJ114295
Host	Rabbit
Reactivity	Mouse
Applications	IHC, WB
Immunogen	Recombinant protein of human CEACAM5
Gene ID	1048
Gene Symbol	CEACAM5
Dilution range	WB 1:500 - 1:2000 IHC 1:50 - 1:100
Tissue Specificity	Found in adenocarcinomas of endodermally derived digestive system epithelium and fetal colon
Purification	Affinity purification
Note	For Research Use Only (RUO).
Protein Name	Carcinoembryonic antigen-related cell adhesion molecule 5

	Carcinoembryonic antigen CEA Meconium antigen 100 CD antigen CD66e
Molecular Weight	76.795 kDa
Clonality	Polyclonal
Conjugation	Unconjugated
Isotype	IgG
Formulation	PBS with 0.02% sodium azide, 50% glycerol, pH7.3.
Storage Instruction	Store at -20C. Avoid freeze / thaw cycles.
Database Links	HGNC:1817OMIM:114890Reactome:R-HSA-163125
Alternative Names	Carcinoembryonic antigen-related cell adhesion molecule 5 Carcinoembryonic antigen CEA Meconium antigen 100 CD antigen CD66e
Function	Cell surface glycoprotein that plays a role in cell adhesion and in intracellular signaling, Receptor for E.coli Dr adhesins,
Cellular Localization	Cell membrane
Post-translational Modifications	Complex immunoreactive glycoprotein with a MW of 180 kDa comprising 60% carbohydrate

St John's Laboratory Ltd

F +44 (0)207 681 2580

T +44 (0)208 223 3081

W <http://www.stjohnslabs.com/>

E info@stjohnslabs.com