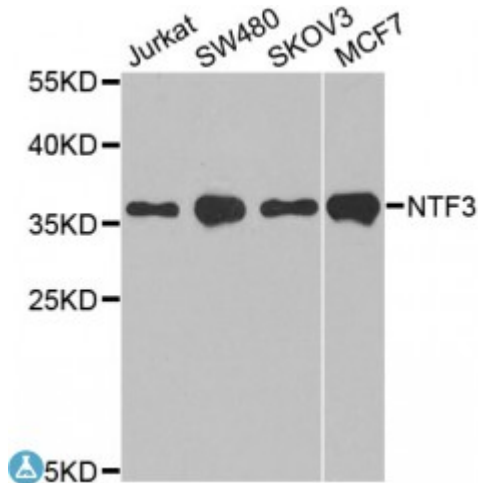


Anti-NTF3 Antibody



Description

The protein encoded by this gene is a member of the neurotrophin family, that controls survival and differentiation of mammalian neurons. This protein is closely related to both nerve growth factor and brain-derived neurotrophic factor. It may be involved in the maintenance of the adult nervous system, and may affect development of neurons in the embryo when it is expressed in human placenta. NTF3-deficient mice generated by gene targeting display severe movement defects of the limbs. The mature peptide of this protein is identical in all mammals examined including human, pig, rat and mouse.

Model	STJ114350
Host	Rabbit
Reactivity	Human, Mouse
Applications	IHC, WB
Immunogen	Recombinant fusion protein containing a sequence corresponding to amino acids 19-257 of human NTF3 (NP_002518.1).
Gene ID	4908
Gene Symbol	NTF3
Dilution range	WB 1:500 - 1:2000 IHC 1:50 - 1:200
Tissue Specificity	Brain and peripheral tissues
Purification	Affinity purification
Note	For Research Use Only (RUO).

Protein Name	Neurotrophin-3 NT-3 HDNF Nerve growth factor 2 NGF-2 Neurotrophic factor
Molecular Weight	29.355 kDa
Clonality	Polyclonal
Conjugation	Unconjugated
Isotype	IgG
Formulation	PBS with 0.02% sodium azide, 50% glycerol, pH7.3.
Storage Instruction	Store at -20C. Avoid freeze / thaw cycles.
Database Links	HGNC:8023OMIM:162660
Alternative Names	Neurotrophin-3 NT-3 HDNF Nerve growth factor 2 NGF-2 Neurotrophic factor
Function	Seems to promote the survival of visceral and proprioceptive sensory neurons
Cellular Localization	Secreted

St John's Laboratory Ltd

F +44 (0)207 681 2580

T +44 (0)208 223 3081

W <http://www.stjohnslabs.com/>

E info@stjohnslabs.com