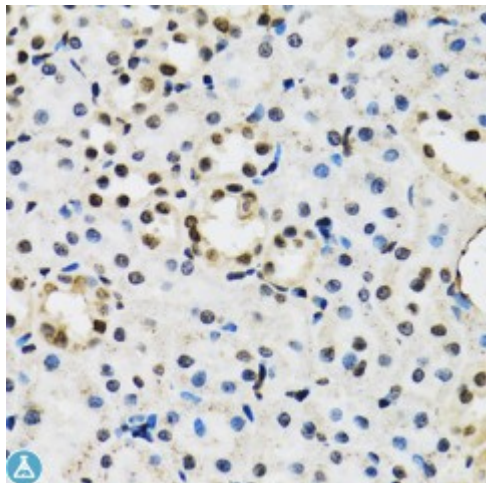


Anti-JADE1 Antibody



Model	STJ114453
Host	Rabbit
Reactivity	Mouse
Applications	IF, IHC
Immunogen	Recombinant fusion protein containing a sequence corresponding to amino acids 210-509 of human JADE1 (NP_079176.2).
Gene ID	79960
Gene Symbol	JADE1
Dilution range	IHC 1:50 - 1:100 IF 1:50 - 1:100
Tissue Specificity	Highly expressed in kidney, Also present in pancreas, liver and heart (at protein level), Down-regulated in renal cancer cells
Purification	Affinity purification
Note	For Research Use Only (RUO).
Protein Name	Protein Jade-1 Jade family PHD finger protein 1 PHD finger protein 17
Molecular Weight	95.533 kDa
Clonality	Polyclonal
Conjugation	Unconjugated
Isotype	IgG
Formulation	PBS with 0.02% sodium azide, 50% glycerol, pH7.3.
Storage Instruction	Store at -20C. Avoid freeze / thaw cycles.

Database Links	HGNC:30027OMIM:610514Reactome:R-HSA-3214847
Alternative Names	Protein Jade-1 Jade family PHD finger protein 1 PHD finger protein 17
Function	Component of the HBO1 complex which has a histone H4-specific acetyltransferase activity, a reduced activity toward histone H3 and is responsible for the bulk of histone H4 acetylation in vivo, Transcriptional coactivator, it may also promote acetylation of nucleosomal histone H4 by KAT5, Promotes apoptosis, May act as a renal tumor suppressor, Negatively regulates canonical Wnt signaling
Cellular Localization	Cytoplasm

St John's Laboratory Ltd

F +44 (0)207 681 2580

T +44 (0)208 223 3081

W <http://www.stjohnslabs.com/>

E info@stjohnslabs.com