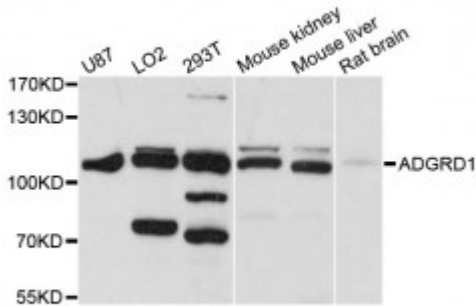


Anti-ADGRD1 Antibody



Model	STJ114503
Host	Rabbit
Reactivity	Human, Mouse, Rat
Applications	WB
Immunogen	Recombinant fusion protein containing a sequence corresponding to amino acids 805-874 of human ADGRD1 (NP_942122.2).
Gene ID	283383
Gene Symbol	ADGRD1
Dilution range	WB 1:500 - 1:2000
Tissue Specificity	Up-regulated in CD133(+) cell population of glioblastoma
Purification	Affinity purification
Note	For Research Use Only (RUO).
Protein Name	Adhesion G-protein coupled receptor D1 G-protein coupled receptor 133 G-protein coupled receptor PGR25
Molecular Weight	96.53 kDa
Clonality	Polyclonal
Conjugation	Unconjugated
Isotype	IgG
Formulation	PBS with 0.02% sodium azide, 50% glycerol, pH7.3.
Storage Instruction	Store at -20C. Avoid freeze / thaw cycles.
Database Links	HGNC:19893OMIM:613639

Alternative Names	Adhesion G-protein coupled receptor D1 G-protein coupled receptor 133 G-protein coupled receptor PGR25
Function	Orphan receptor, Signals via G(s)-alpha family of G-proteins ,
Cellular Localization	Cell membrane

St John's Laboratory Ltd

F +44 (0)207 681 2580

T +44 (0)208 223 3081

W <http://www.stjohnslabs.com/>

E info@stjohnslabs.com