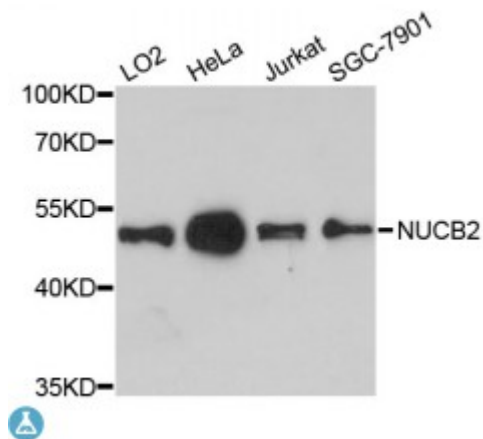


## Anti-NUCB2 Antibody



### Description

This gene encodes a protein with a suggested role in calcium level maintenance, eating regulation in the hypothalamus, and release of tumor necrosis factor from vascular endothelial cells. This protein binds calcium and has EF-folding domains.

<b>Model</b>	STJ114515
<b>Host</b>	Rabbit
<b>Reactivity</b>	Human
<b>Applications</b>	WB
<b>Immunogen</b>	Recombinant fusion protein containing a sequence corresponding to amino acids 321-420 of human NUCB2 (NP_005004.1).
<b>Gene ID</b>	<a href="#">4925</a>
<b>Gene Symbol</b>	<a href="#">NUCB2</a>
<b>Dilution range</b>	WB 1:500 - 1:2000
<b>Tissue Specificity</b>	Predominantly expressed in spleen, testis and normal stomach
<b>Purification</b>	Affinity purification
<b>Note</b>	For Research Use Only (RUO).
<b>Protein Name</b>	Nucleobindin-2 DNA-binding protein NEFA Gastric cancer antigen Zg4 Prepronesfatin
<b>Molecular Weight</b>	50.196 kDa
<b>Clonality</b>	Polyclonal

<b>Conjugation</b>	Unconjugated
<b>Isotype</b>	IgG
<b>Formulation</b>	PBS with 0.02% sodium azide, 50% glycerol, pH7.3.
<b>Storage Instruction</b>	Store at -20C. Avoid freeze / thaw cycles.
<b>Database Links</b>	<a href="#">HGNC:8044OMIM:608020</a>
<b>Alternative Names</b>	Nucleobindin-2 DNA-binding protein NEFA Gastric cancer antigen Zg4 Prepronesfatin
<b>Function</b>	Calcium-binding protein, May have a role in calcium homeostasis
<b>Cellular Localization</b>	Golgi apparatus, Nesfatin-1: Secreted

---

**St John's Laboratory Ltd**

**F** +44 (0)207 681 2580

**T** +44 (0)208 223 3081

**W** <http://www.stjohnslabs.com/>

**E** [info@stjohnslabs.com](mailto:info@stjohnslabs.com)