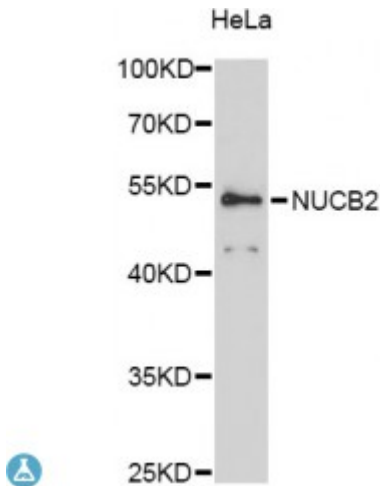


Anti-NUCB2 Antibody



Description

This gene encodes a protein with a suggested role in calcium level maintenance, eating regulation in the hypothalamus, and release of tumor necrosis factor from vascular endothelial cells. This protein binds calcium and has EF-folding domains.

Model	STJ114516
Host	Rabbit
Reactivity	Human, Mouse
Applications	WB
Immunogen	Recombinant fusion protein containing a sequence corresponding to amino acids 321-420 of human NUCB2 (NP_005004.1).
Gene ID	4925
Gene Symbol	NUCB2
Dilution range	WB 1:500 - 1:2000
Tissue Specificity	Predominantly expressed in spleen, testis and normal stomach
Purification	Affinity purification
Note	For Research Use Only (RUO).
Protein Name	Nucleobindin-2 DNA-binding protein NEFA Gastric cancer antigen Zg4 Prepronesfatin
Molecular Weight	50.196 kDa
Clonality	Polyclonal

Conjugation	Unconjugated
Isotype	IgG
Formulation	PBS with 0.02% sodium azide, 50% glycerol, pH7.3.
Storage Instruction	Store at -20C. Avoid freeze / thaw cycles.
Database Links	HGNC:8044OMIM:608020
Alternative Names	Nucleobindin-2 DNA-binding protein NEFA Gastric cancer antigen Zg4 Prepronesfatin
Function	Calcium-binding protein, May have a role in calcium homeostasis
Cellular Localization	Golgi apparatus, Nesfatin-1: Secreted

St John's Laboratory Ltd

F +44 (0)207 681 2580

T +44 (0)208 223 3081

W <http://www.stjohnslabs.com/>

E info@stjohnslabs.com