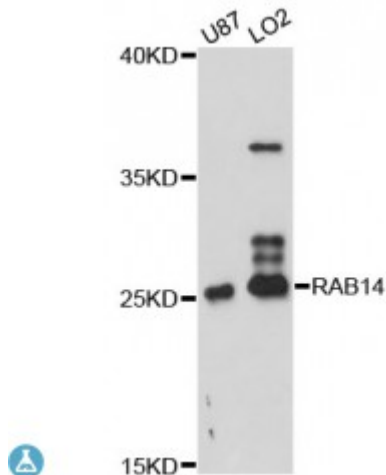


Anti-RAB14 Antibody



Model	STJ114625
Host	Rabbit
Reactivity	Human
Applications	WB
Immunogen	Recombinant fusion protein containing a sequence corresponding to amino acids 126-215 of human RAB14 (NP_057406.2).
Gene ID	51552
Gene Symbol	RAB14
Dilution range	WB 1:500 - 1:2000
Purification	Affinity purification
Note	For Research Use Only (RUO).
Protein Name	Ras-related protein Rab-14
Molecular Weight	23.897 kDa
Clonality	Polyclonal
Conjugation	Unconjugated
Isotype	IgG
Formulation	PBS with 0.02% sodium azide, 50% glycerol, pH7.3.
Storage Instruction	Store at -20C. Avoid freeze / thaw cycles.
Database Links	HGNC:16524 OMIM:612673 Reactome:R-HSA-1445148
Alternative Names	Ras-related protein Rab-14

Function	Involved in membrane trafficking between the Golgi complex and endosomes during early embryonic development, Regulates the Golgi to endosome transport of FGFR-containing vesicles during early development, a key process for developing basement membrane and epiblast and primitive endoderm lineages during early postimplantation development, May act by modulating the kinesin KIF16B-cargo association to endosomes , Regulates, together with its guanine nucleotide exchange factor DENND6A, the specific endocytic transport of ADAM10, N-cadherin/CDH2 shedding and cell-cell adhesion,
Cellular Localization	Recycling endosome,

St John's Laboratory Ltd

F +44 (0)207 681 2580

T +44 (0)208 223 3081

W <http://www.stjohnslabs.com/>

E info@stjohnslabs.com