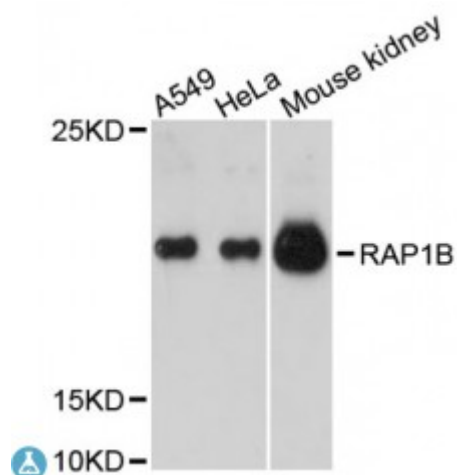


Anti-RAP1B Antibody



Description

This gene encodes a member of the RAS-like small GTP-binding protein superfamily. Members of this family regulate multiple cellular processes including cell adhesion and growth and differentiation. This protein localizes to cellular membranes and has been shown to regulate integrin-mediated cell signaling. This protein also plays a role in regulating outside-in signaling in platelets. Alternate splicing results in multiple transcript variants. Pseudogenes of this gene are found on chromosomes 3, 5, 6 and 9.

Model	STJ114791
Host	Rabbit
Reactivity	Human, Mouse
Applications	WB
Immunogen	Recombinant fusion protein containing a sequence corresponding to amino acids 1-184 of human RAP1B (NP_056461.1).
Gene ID	5908
Gene Symbol	RAP1B
Dilution range	WB 1:500 - 1:2000
Purification	Affinity purification
Note	For Research Use Only (RUO).
Protein Name	Ras-related protein Rap-1b GTP-binding protein smg p21B
Molecular Weight	20.825 kDa

Clonality	Polyclonal
Conjugation	Unconjugated
Isotype	IgG
Formulation	PBS with 0.02% sodium azide, 50% glycerol, pH7.3.
Storage Instruction	Store at -20C. Avoid freeze / thaw cycles.
Database Links	HGNC:9857OMIM:179530Reactome:R-HSA-354192
Alternative Names	Ras-related protein Rap-1b GTP-binding protein smg p21B
Function	GTP-binding protein that possesses intrinsic GTPase activity, Contributes to the polarizing activity of KRIT1 and CDH5 in the establishment and maintenance of correct endothelial cell polarity and vascular lumen, Required for the localization of phosphorylated PRKCZ, PARD3 and TIAM1 to the cell junction, Plays a role in the establishment of basal endothelial barrier function,
Cellular Localization	Cell membrane, Cytoplasm, cytosol, Cell junction,

St John's Laboratory Ltd

F +44 (0)207 681 2580

T +44 (0)208 223 3081

W <http://www.stjohnslabs.com/>

E info@stjohnslabs.com