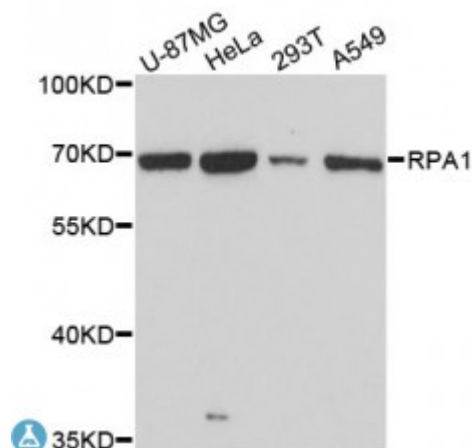


Anti-RPA1 Antibody



Model	STJ114904
Host	Rabbit
Reactivity	Human
Applications	WB
Immunogen	Recombinant fusion protein containing a sequence corresponding to amino acids 1-240 of human RPA1 (NP_002936.1).
Gene ID	6117
Gene Symbol	RPA1
Dilution range	WB 1:500 - 1:2000
Purification	Affinity purification
Note	For Research Use Only (RUO).
Protein Name	Replication protein A 70 kDa DNA-binding subunit RP-A p70 Replication factor A protein 1 RF-A protein 1 Single-stranded DNA-binding protein
Molecular Weight	68.138 kDa
Clonality	Polyclonal
Conjugation	Unconjugated
Isotype	IgG
Formulation	PBS with 0.02% sodium azide, 50% glycerol, pH7.3.
Storage Instruction	Store at -20C. Avoid freeze / thaw cycles.
Database Links	HGNC:10289 OMIM:179835 Reactome:R-HSA-110312
Alternative Names	Replication protein A 70 kDa DNA-binding subunit RP-A p70 Replication

factor A protein 1 RF-A protein 1 Single-stranded DNA-binding protein

Function

As part of the heterotrimeric replication protein A complex (RPA/RP-A), binds and stabilizes single-stranded DNA intermediates, that form during DNA replication or upon DNA stress, It prevents their reannealing and in parallel, recruits and activates different proteins and complexes involved in DNA metabolism ,

Cellular Localization

Nucleus

**Post-translational
Modifications**

DNA damage-induced 'Lys-63'-linked polyubiquitination by PRPF19 mediates ATRIP recruitment to the RPA complex at sites of DNA damage and activation of ATR ,

St John's Laboratory Ltd

F +44 (0)207 681 2580

T +44 (0)208 223 3081

W <http://www.stjohnslabs.com/>

E info@stjohnslabs.com