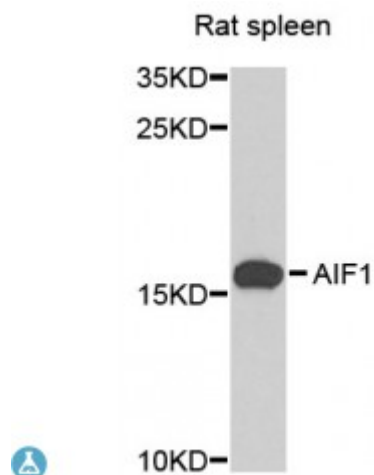


Anti-AIF1 Antibody



Description

This gene encodes a protein that binds actin and calcium. This gene is induced by cytokines and interferon and may promote macrophage activation and growth of vascular smooth muscle cells and T-lymphocytes. Polymorphisms in this gene may be associated with systemic sclerosis. Alternative splicing results in multiple transcript variants, but the full-length and coding nature of some of these variants is not certain.

Model	STJ114929
Host	Rabbit
Reactivity	Mouse, Rat
Applications	WB
Immunogen	Recombinant fusion protein containing a sequence corresponding to amino acids 1-147 of human AIF1 (NP_001614.3).
Gene ID	199
Gene Symbol	AIF1
Dilution range	WB 1:500 - 1:2000
Tissue Specificity	Detected in T-lymphocytes and peripheral blood mononuclear cells
Purification	Affinity purification
Note	For Research Use Only (RUO).
Protein Name	Allograft inflammatory factor 1 AIF-1 Ionized calcium-binding adapter molecule 1 Protein G1
Molecular Weight	16.703 kDa

Clonality	Polyclonal
Conjugation	Unconjugated
Isotype	IgG
Formulation	PBS with 0.02% sodium azide, 50% glycerol, pH7.3.
Storage Instruction	Store at -20C. Avoid freeze / thaw cycles.
Database Links	HGNC:352OMIM:601833
Alternative Names	Allograft inflammatory factor 1 AIF-1 Ionized calcium-binding adapter molecule 1 Protein G1
Function	Actin-binding protein that enhances membrane ruffling and RAC activation, Enhances the actin-bundling activity of LCP1, Binds calcium, Plays a role in RAC signaling and in phagocytosis, May play a role in macrophage activation and function, Promotes the proliferation of vascular smooth muscle cells and of T-lymphocytes, Enhances lymphocyte migration, Plays a role in vascular inflammation,
Cellular Localization	Cytoplasm, cytoskeleton
Post-translational Modifications	Phosphorylated on serine residues

St John's Laboratory Ltd

F +44 (0)207 681 2580

T +44 (0)208 223 3081

W <http://www.stjohnslabs.com/>

E info@stjohnslabs.com