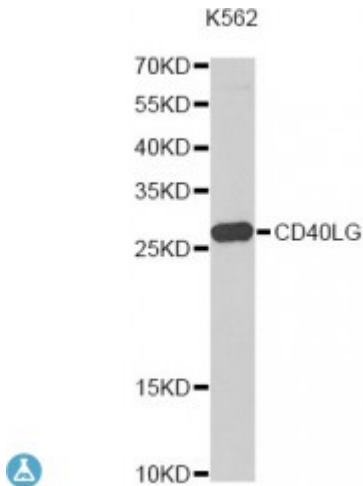


Anti-CD40LG Antibody



Description

The protein encoded by this gene is expressed on the surface of T cells. It regulates B cell function by engaging CD40 on the B cell surface. A defect in this gene results in an inability to undergo immunoglobulin class switch and is associated with hyper-IgM syndrome.

Model	STJ114971
Host	Rabbit
Reactivity	Human
Applications	WB
Immunogen	A synthetic peptide of human CD40LG
Gene ID	959
Gene Symbol	CD40LG
Dilution range	WB 1:1000 - 1:2000
Tissue Specificity	Specifically expressed on activated CD4+ T-lymphocytes
Purification	Affinity purification
Note	For Research Use Only (RUO).
Protein Name	CD40 ligand CD40-L T-cell antigen Gp39 TNF-related activation protein TRAP Tumor necrosis factor ligand superfamily member 5 CD antigen CD154
Molecular Weight	29.274 kDa
Clonality	Polyclonal

Conjugation	Unconjugated
Isotype	IgG
Formulation	PBS with 0.02% sodium azide, 50% glycerol, pH7.3.
Storage Instruction	Store at -20C. Avoid freeze / thaw cycles.
Database Links	HGNC:11935OMIM:300386Reactome:R-HSA-198933
Alternative Names	CD40 ligand CD40-L T-cell antigen Gp39 TNF-related activation protein TRAP Tumor necrosis factor ligand superfamily member 5 CD antigen CD154
Function	Cytokine that binds to CD40/TNFRSF5 inhibitor-sensitive pathway,
Cellular Localization	Cell membrane
Post-translational Modifications	The soluble form derives from the membrane form by proteolytic processing,

St John's Laboratory Ltd

F +44 (0)207 681 2580

T +44 (0)208 223 3081

W <http://www.stjohnslabs.com/>

E info@stjohnslabs.com