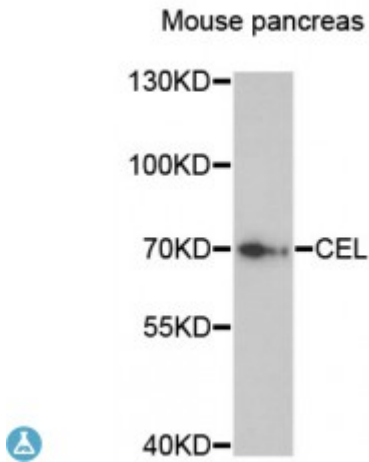


Anti-CEL Antibody



Description

The protein encoded by this gene is a glycoprotein secreted from the pancreas into the digestive tract and from the lactating mammary gland into human milk. The physiological role of this protein is in cholesterol and lipid-soluble vitamin ester hydrolysis and absorption. This encoded protein promotes large chylomicron production in the intestine. Also its presence in plasma suggests its interactions with cholesterol and oxidized lipoproteins to modulate the progression of atherosclerosis. In pancreatic tumoral cells, this encoded protein is thought to be sequestered within the Golgi compartment and is probably not secreted. This gene contains a variable number of tandem repeat (VNTR) polymorphism in the coding region that may influence the function of the encoded protein.

Model	STJ114978
Host	Rabbit
Reactivity	Mouse
Applications	WB
Immunogen	Recombinant fusion protein containing a sequence corresponding to amino acids 350-550 of human CEL (NP_001798.2).
Gene Symbol	CEL
Dilution range	WB 1:500 - 1:2000
Tissue Specificity	Mammary gland and pancreas, Expressed by eosinophils
Purification	Affinity purification
Note	For Research Use Only (RUO).
Protein Name	Bile salt-activated lipase BAL

Molecular Weight	79.322 kDa
Clonality	Polyclonal
Conjugation	Unconjugated
Isotype	IgG
Formulation	PBS with 0.02% sodium azide, 50% glycerol, pH7.3.
Storage Instruction	Store at -20C. Avoid freeze / thaw cycles.
Database Links	HGNC:1848OMIM:114840Reactome:R-HSA-192456
Alternative Names	Bile salt-activated lipase BAL
Function	Catalyzes fat and vitamin absorption, Acts in concert with pancreatic lipase and colipase for the complete digestion of dietary triglycerides
Cellular Localization	Secreted

St John's Laboratory Ltd

F +44 (0)207 681 2580

T +44 (0)208 223 3081

W <http://www.stjohnslabs.com/>

E info@stjohnslabs.com